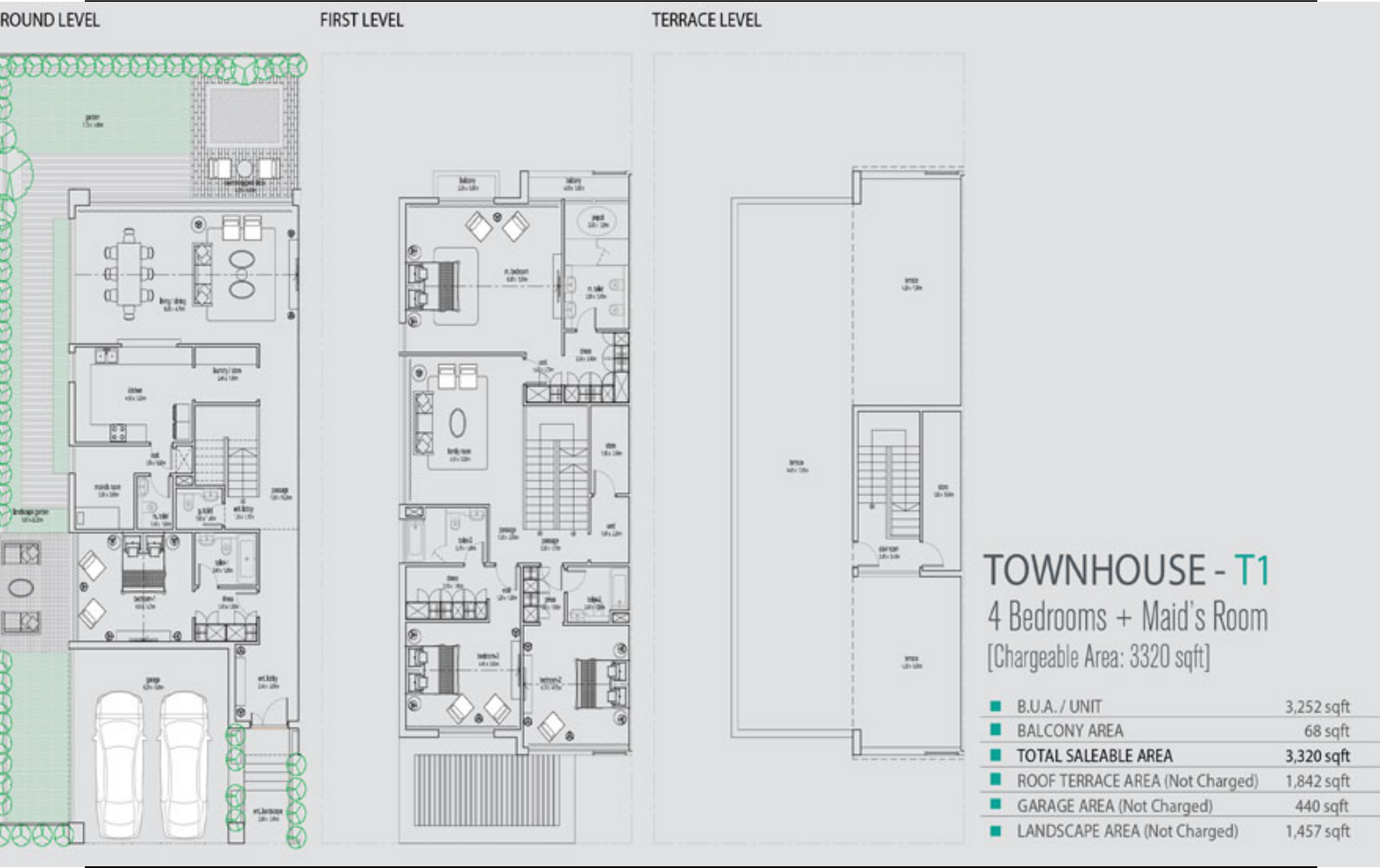
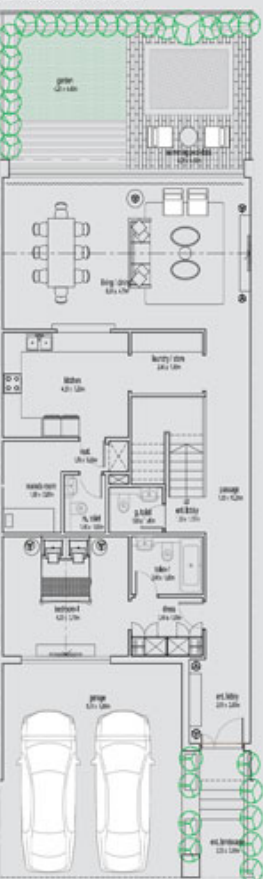


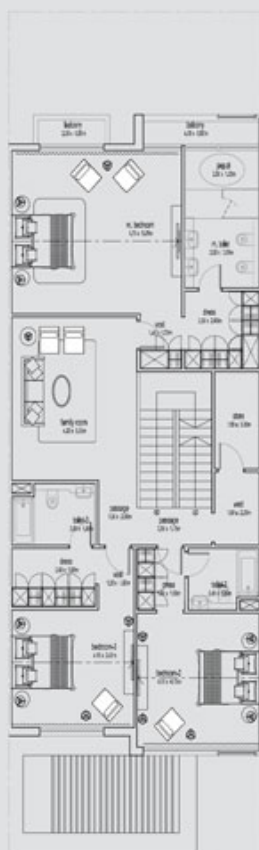
# Grand Views Townhouses



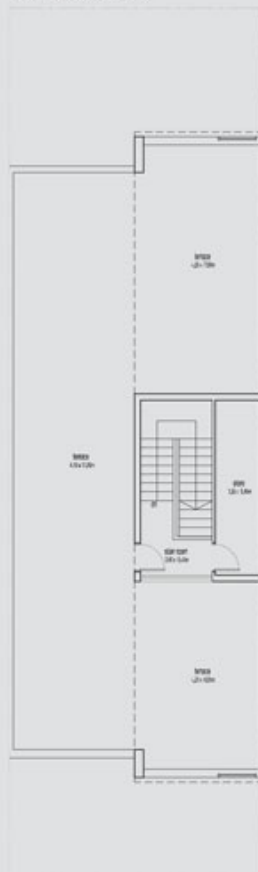
## GROUND LEVEL



## FIRST LEVEL



## TERRACE LEVEL



## TOWNHOUSE - T2

4 Bedrooms + Maid's Room  
[Chargeable Area: 3130 sqft]

■ B.U.A. / UNIT	3062 sqft
■ BALCONY AREA	68 sqft
■ TOTAL SALEABLE AREA	3130 sqft
■ ROOF TERRACE AREA (Not Charged)	1743 sqft
■ GARAGE AREA (Not Charged)	433 sqft
■ LANDSCAPE AREA (Not Charged)	549 sqft