

VILLA

TROPICAL
MIST

THE BEACH COLLECTION

PALM
JEBEL ALI
NAKHEEL

NAKHEEL'S DESIGN VISION

“ WE ARE BUILDING A NEW REALITY
FOR OUR PEOPLE, A NEW FUTURE
FOR OUR CHILDREN, AND A NEW
MODEL OF DEVELOPMENT. ”

H.H Sheikh Mohammed bin Rashid Al Maktoum

UAE VICE-PRESIDENT, PRIME MINISTER, AND RULER OF DUBAI

\ Cities, as dreams, are built by desires.

Nakheel is a world-leading master developer, delivering award-winning projects united by the same endless pursuit of perfection. Nakheel creates new worlds to build a new happiness: not a passing and evanescent happiness, but something to leave behind, something that will inspire those who come after us. The pursuit of perfection and happiness is a real journey culminating in the realisation of Palm Jebel Ali: a pinnacle of engineering, design excellence and Dubai living. This project is unlike any other, it symbolises a journey. Not just of a company, but of a nation.

A journey that will involve men, women, families: whoever will desire to live the wonder of colour, the music of emotion, the excellence of shape, the

harmony of nature: the unprecedented and exclusive world of Palm Jebel Ali.

In bringing together leading designers with a variety of influences and experiences, two magnificent collections of distinctive villas have been created. With inspiration ranging from vernacular architecture to the sunlit, coastal setting to ultra-luxurious materials, this combination of creative minds has ensured that each villa that lines the fronds of Palm Jebel Ali will have a truly unique style and character. Each home will offer an unrivalled living experience to its residents.

This is your home. This is Palm Jebel Ali.

1 \ A C U R A T E D C O L L E C T I O N

T H E
B E A C H V I L L A S

\ Serenity By The Sea

In a beach villa, a happy tomorrow arrives every day, every single dawn.

Beachfront living at its finest	—	P. 6
An iconic neighbourhood	—	P. 15
Introducing the Beach Collection	—	P. 20

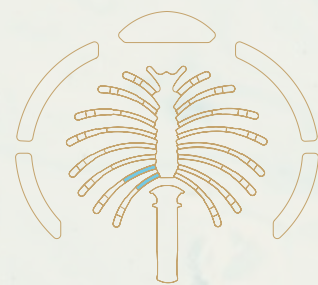
2 \ L I V E I N T H E M A S T E R P I E C E

O W N A P I E C E
O F H I S T O R Y

The Beach Collection	—	P. 28
Villa Tropical Mist	—	P. 34

A C U R A T E D C O L L E C T I O N

\ 1



T H E
B E A C H
V I L L A S

\ Serenity By The Sea

Beachfront living at its finest
An iconic neighbourhood
Introducing the Beach Collection

— P.6
— P.15
— P.20

— BEACHFRONT LIVING AT ITS FINEST

SUN, SEA, SAND, & SOPHISTICATION

EDEN HAS A NEW ADDRESS.

Welcome to Palm Jebel Ali; a world-class lifestyle destination, meticulously designed and impeccably curated, providing unrivalled luxury living to its residents.



Live a life of **serenity and comfort** in Dubai's most coveted district, a true kaleidoscope, born out of colourful greenery, azure waters, and pristine white sands.

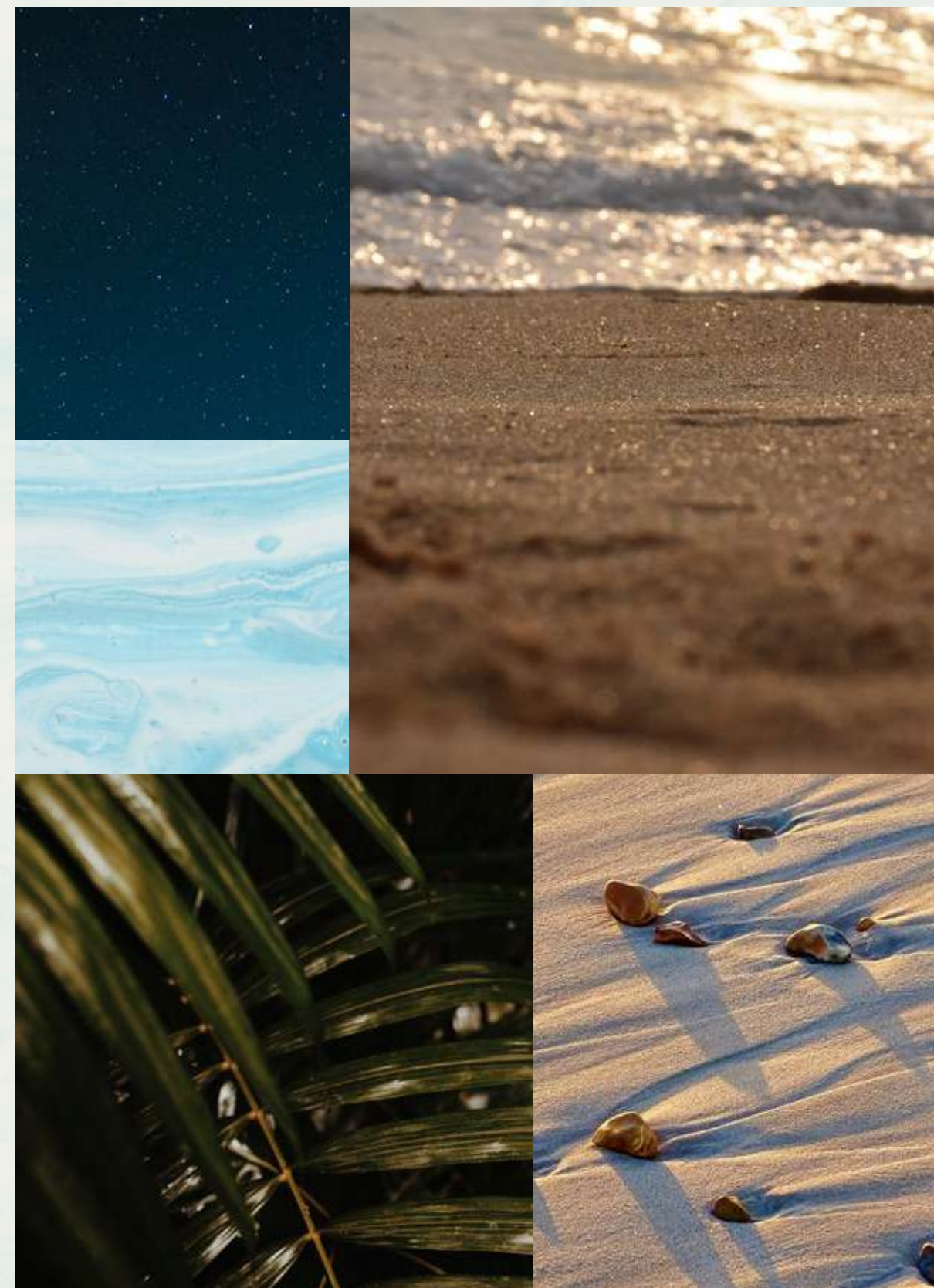
LIVE IN HARMONY WITH NATURE, BETWEEN THE CITY AND THE SKY.

Palm Jebel Ali rises from the sea to form a perfect paradise archipelago. This masterpiece of luxury living offers a unique perspective on Dubai's skyline, from a haven of tranquillity, and boasts the longest coastline of any destination in Dubai. Palm Jebel Ali is located minutes away from the energy of the city, with excellent connectivity via Sheikh Zayed Road (E11) to other Dubai destinations or to Abu Dhabi. Palm Jebel Ali will be the feature destination of Dubai's rapidly developing southern urban centre. Spectacular properties and five-star amenities are skilfully woven together to create a highly desirable residential destination.





THE
FRONDS
BEACH COLLECTION





— FLOURISHING GREEN FRONDS

AN ICONIC NEIGHBOURHOOD

ARTFULLY DESIGNED, PRIVATE
NEIGHBOURHOODS, FOR SOPHISTICATED
CITY LIVING.

Each exclusive frond forms its own thoughtfully planned private neighbourhood. Discover elegant streets painted in varying shades of green. Lush, layered flora merges with carefully curated foliage to create a perfectly harmonious, residential landscape, directly on the beachfront.

The fronds community focuses on offering an active lifestyle with wide walkable streets allowing for pedestrians and bikers to access the beach through pocketed parks. The frond streetscape offers an intensified lush and fragrant landscape providing adequate shade coverage, with designated tree corridors alternating with streetlighting, and an additional layer of planting buffer to complete this idyllic verdant oasis.





Savour the refined, tropical atmosphere that surrounds you as you step out from your serene garden onto the sandy beach that lies at your doorstep. Enjoy the calming sounds of the waves and the openness of the sea, for moments of pure relaxation.

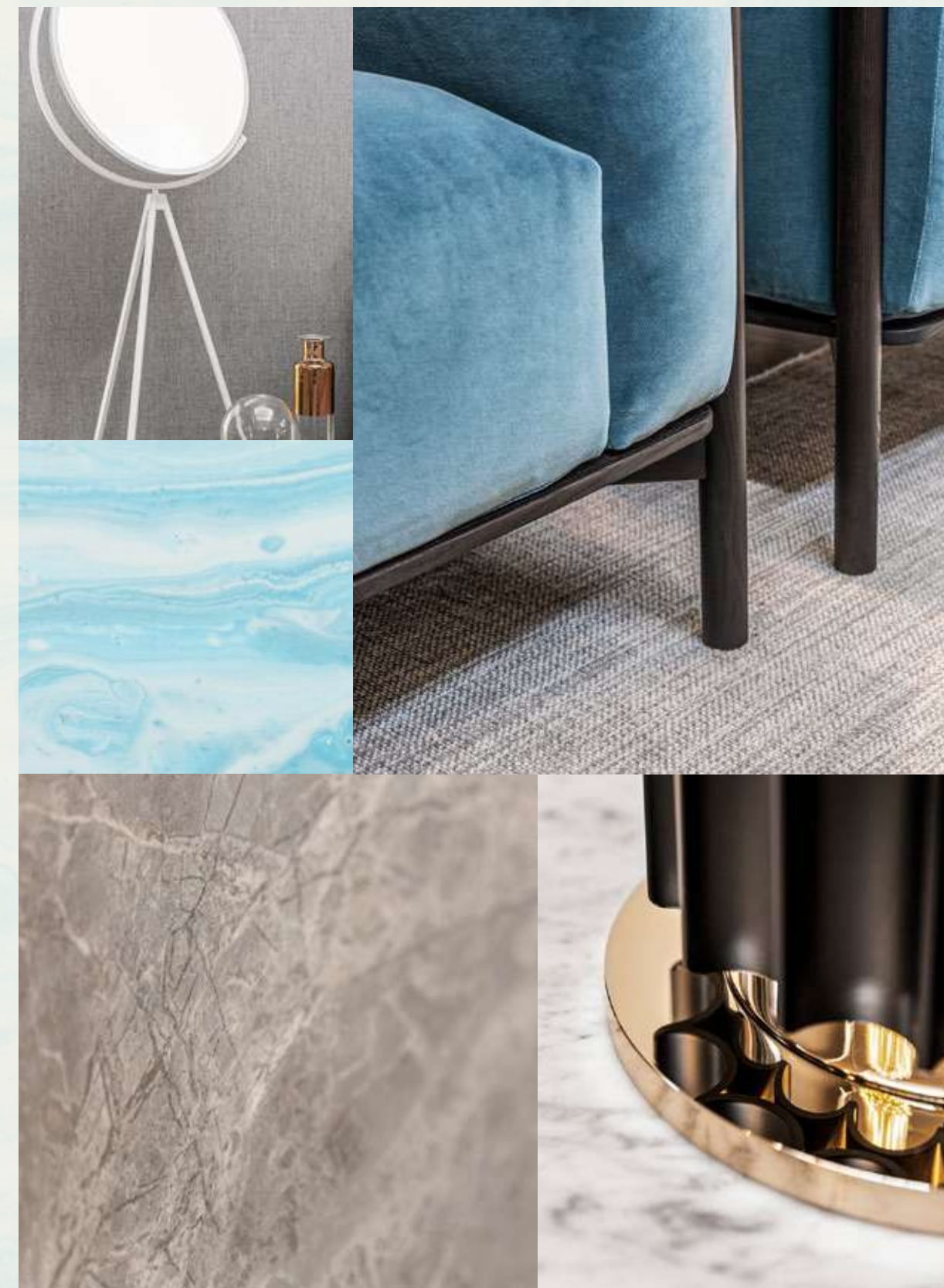


INTRODUCING THE BEACH COLLECTION

CRAFTED WITH CARE

SOPHISTICATED STYLE AND PERFECT POISE.
DISCOVER THE BLISSFUL [BEACH COLLECTION](#).

An inspired collection nestled in an idyllic setting.
Relax as you listen to the sounds of calming water
from the comfort of your enchanting, beachfront
terrace.

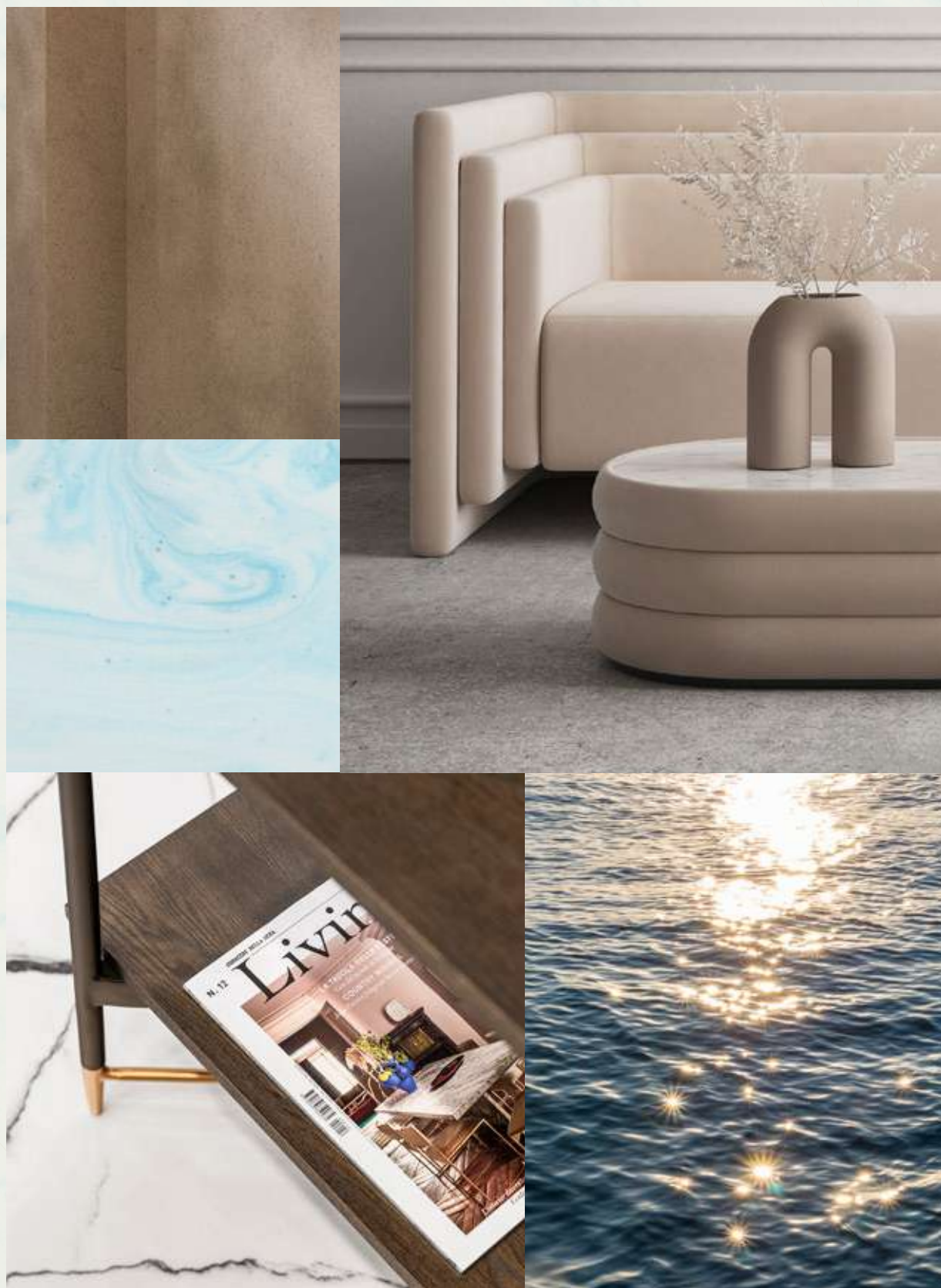


Exceptional design, a breathtaking beachfront location, and the tranquillity of an exclusive, private neighbourhood.

HOMES DESIGNED WITH STYLISH FLAIR.

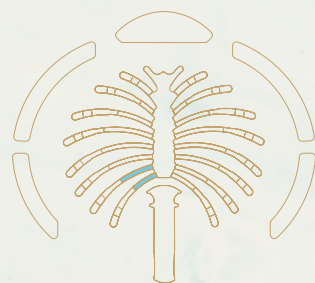
The Beach Collection is for those who seek a home with a distinctly creative, contemporary design. Discover the wide range of unique architectural designs developed to accommodate a variety of lifestyles with thoughtful spacious layouts that ensure seamless indoor-outdoor living, designed to maximise views of the sea and integrate a feeling of outdoor and indoor harmony. The contemporary architecture achieves a timeless appeal. Villa finishes are unique to each villa complimenting its design and enhancing its key features.





LIVE IN THE MASTERPIECE

\ 2



OWN A PIECE OF

HISTORY

\ Eight Unique Beach Villas

The Beach Collection
Villa Tropical Mist

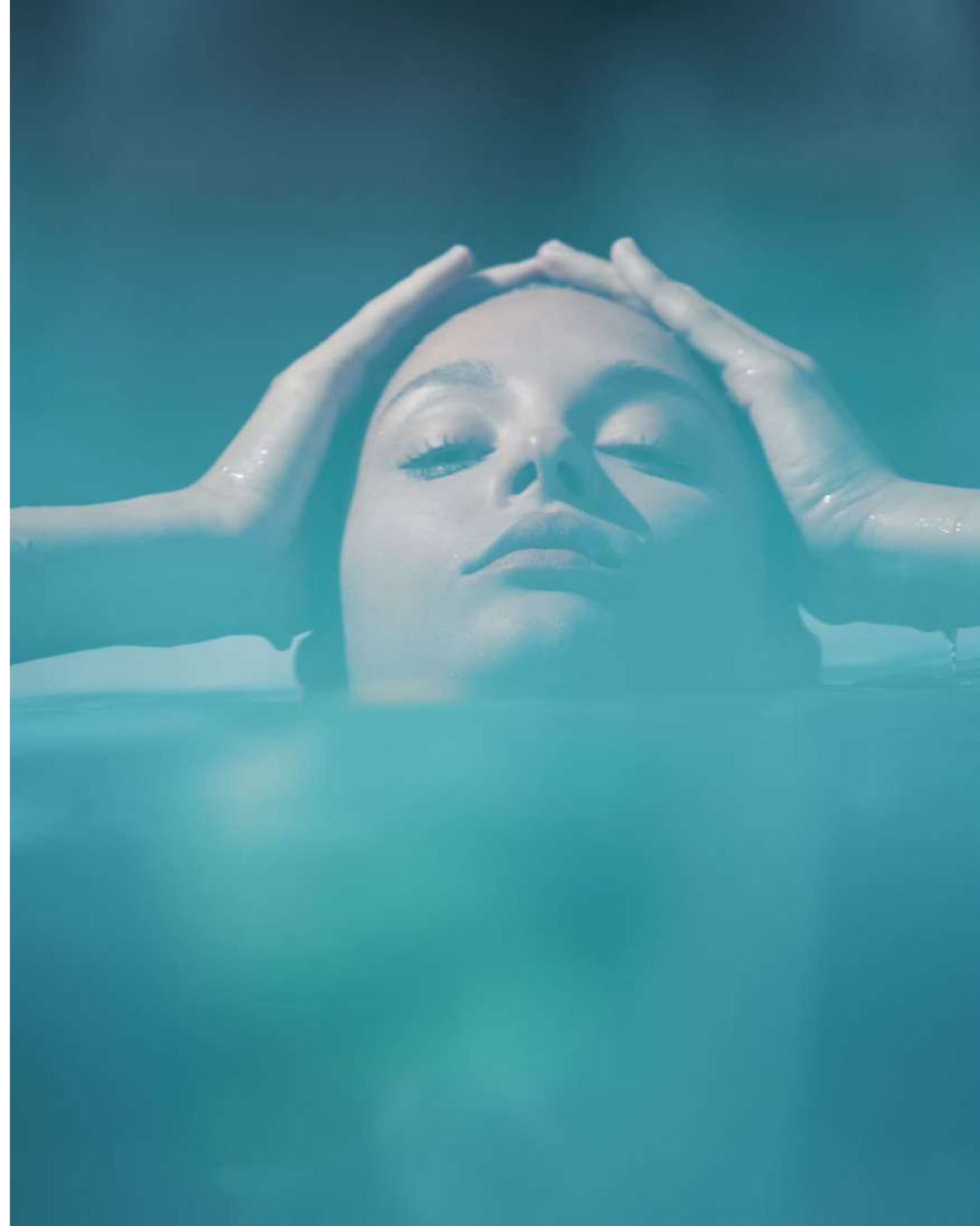
— P.28
— P.34

THE BEACH COLLECTION

WELCOMING WATERFRONT RESIDENCES

THE CONTEMPORARY **COMPOSITION** OF EACH STATEMENT VILLA HAS BEEN METICULOUSLY DESIGNED.

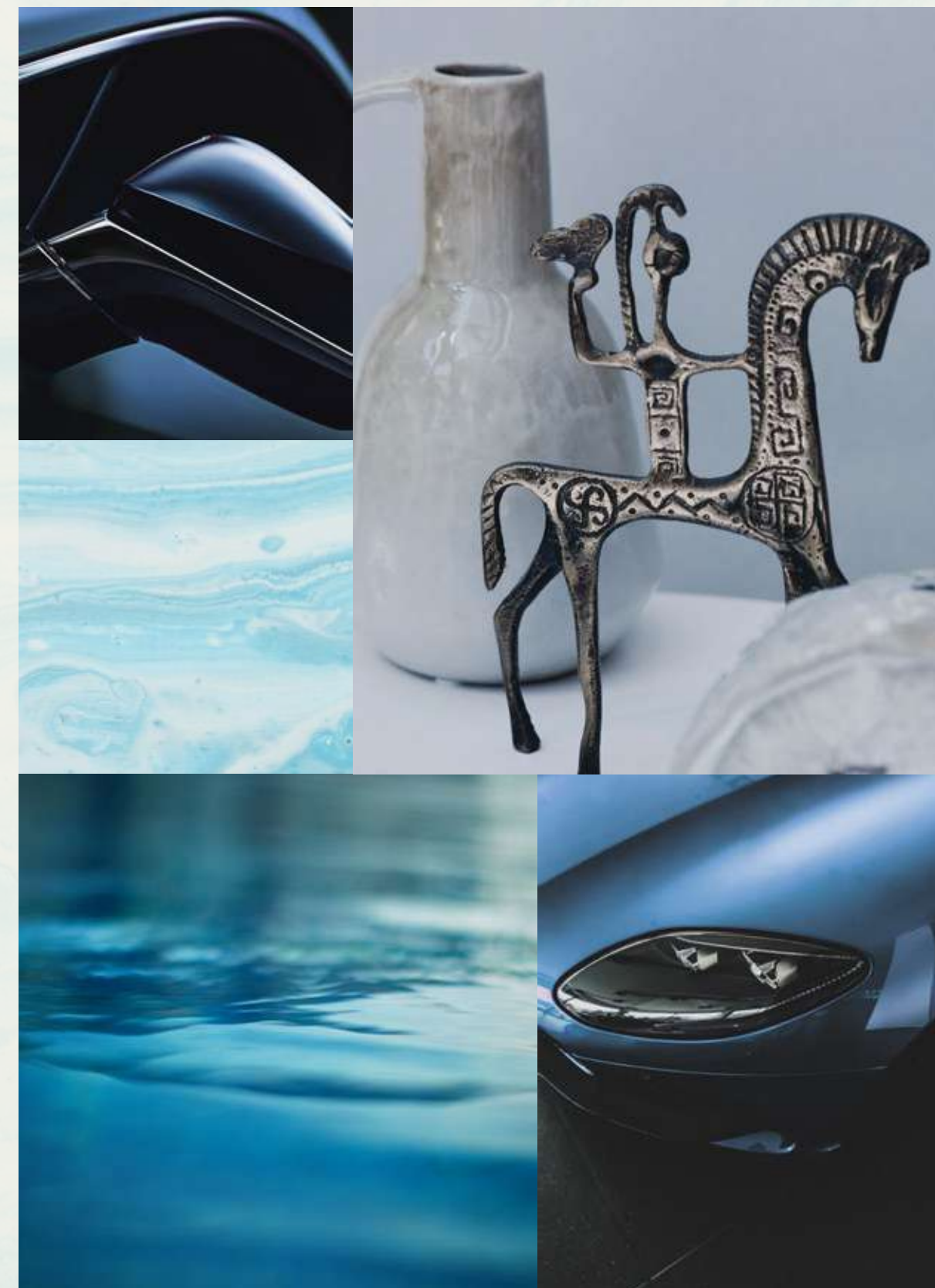
Imagine living an exclusive waterfront experience. Every day, every morning and every evening, watching and listening to the sea with its waves, its sinuous movements, its sparkling surface: the perfect blend, creating a harmonious landscape. A gorgeous living space, up to six generous bedrooms with private ensuite bathrooms, lush greenery and colourful planting, a careful design of every detail, and – overall – the feeling of a continuous and open relationship between indoors and outdoors. In the Beach Villas, everyday life is a natural expression of harmony and perfection.



Located on the exclusive fronds, each residence enjoys **direct beach connectivity** in this serene, private neighbourhood.

TRUE LUXURY LIVING REFLECTS
YOUR OWN DESIRES.

Choose an elegant home of the highest quality and enjoy an unrivalled lifestyle.
Each villa will be unique, bespoke to realise individual needs and personal balance.
We build happiness and prosperity for all our residents.





BEACH CONNECTIVITY / SERENE / PRIVATE

VILLA
TROPICAL
MIST

\ Six-Bedroom Property

“A natural oasis that engages Jebel Ali’s coastal vistas,
where traditional materials meet contemporary living.”

LOCI – ARCHITECT

VILLA TROPICAL MIST

A REFRESHING
APPROACH TO REFINED
BEACHFRONT LIVING.

WHERE CONTEMPORARY LIVING AND
TRADITIONAL DESIGN PRINCIPLES UNITE.

With an emphasis on locally sourced materials and enhanced shading measures, this villa displays extra sensitivity to its environment, offering extensive screening for privacy on the roadside while the seaside is mostly glazed to maximise natural light within. In this private tropical oasis, the ever-changing natural setting enlivens each day. From dramatic views over the dynamic sea, to panoramic vistas of the breathtaking sky and thriving greenery, every day will bring a fresh scenic backdrop to your glorious beachfront garden for you to contemplate from. This home is a fascinating discovery of the beauty of nature.



“The materiality of the villa is natural and locally adapted. The emphasis is on the creation of an impressive panoramic horizontal quality, focusing interior spaces towards the sea views from each level.”

LOCI – ARCHITECT





THIS IS YOUR GARDEN, YOUR PERSONAL OASIS. SIT BACK AND RELAX UNDER THE
DAZZLING SUN AS THE GLISTENING WAVES DANCE BEFORE YOU.

Returning home to this sophisticated façade, with its chic neutral tones, will forever be a delight.

It will become your tropical haven.

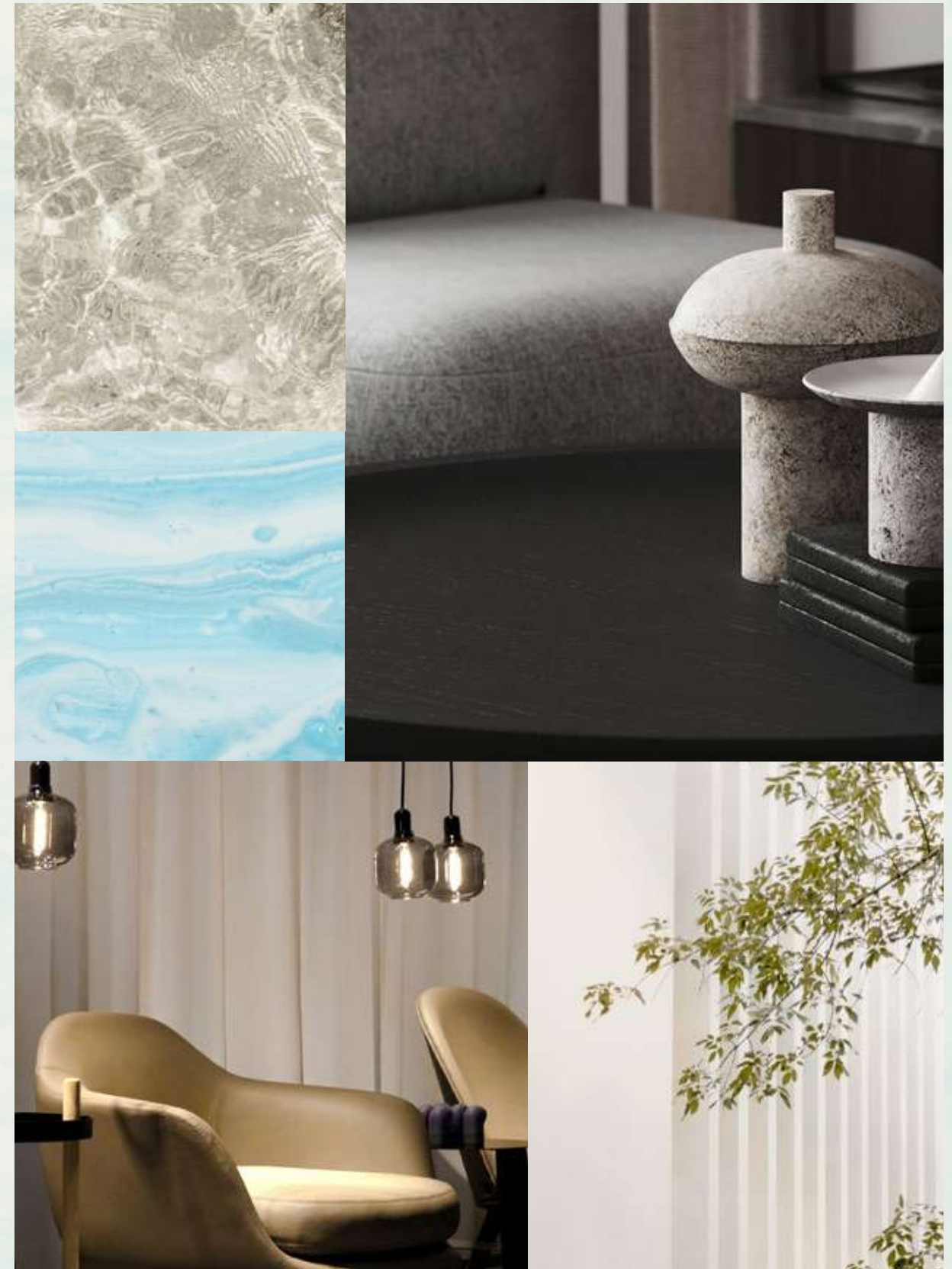


A perfect paradise surrounded
by the natural elements.

A HOME IN HARMONY WITH NATURE.

This spectacular home, with its warm and inviting
ambience, is where you will truly feel as if you are
living on your own living on your own tropical
paradise island.

The indoor world seamlessly connects to the
natural setting through the use of exquisite natural
materials and crafted outdoor spaces.



The warm natural materials, in lighter tones, brighten up the interiors and create an uplifting environment that is open and flexible.

This is the perfect setting for hosting friends or spending special moments with family.



The framed waterfront views are the highlight of every room. The sense of peace and serenity that the sea radiates is felt throughout this wonderful home.





THE WELCOMING DOUBLE-HEIGHT FOYER IS A STATEMENT FEATURE. TAKE IN THE GORGEOUS VIEWS OF THE TROPICAL PALM TREES AND DAZZLING BLUE SEA THAT WILL ALWAYS GREET YOU ON ARRIVAL.

Wake up to brilliant sunlight, breath in the salty-sweet sea breeze, and step outside to admire the perfect panorama.

Feel a total sense of relaxation in your tropical paradise.



On the sumptuous rooftop, enjoy moments of deep relaxation. This contemporary open space is ideal for practising activities that focus on your wellness. Nature, as always, creates a soothing backdrop for your everyday life.



When contemporary design with
natural flair meets traditional design values,
an exceptional result is achieved.

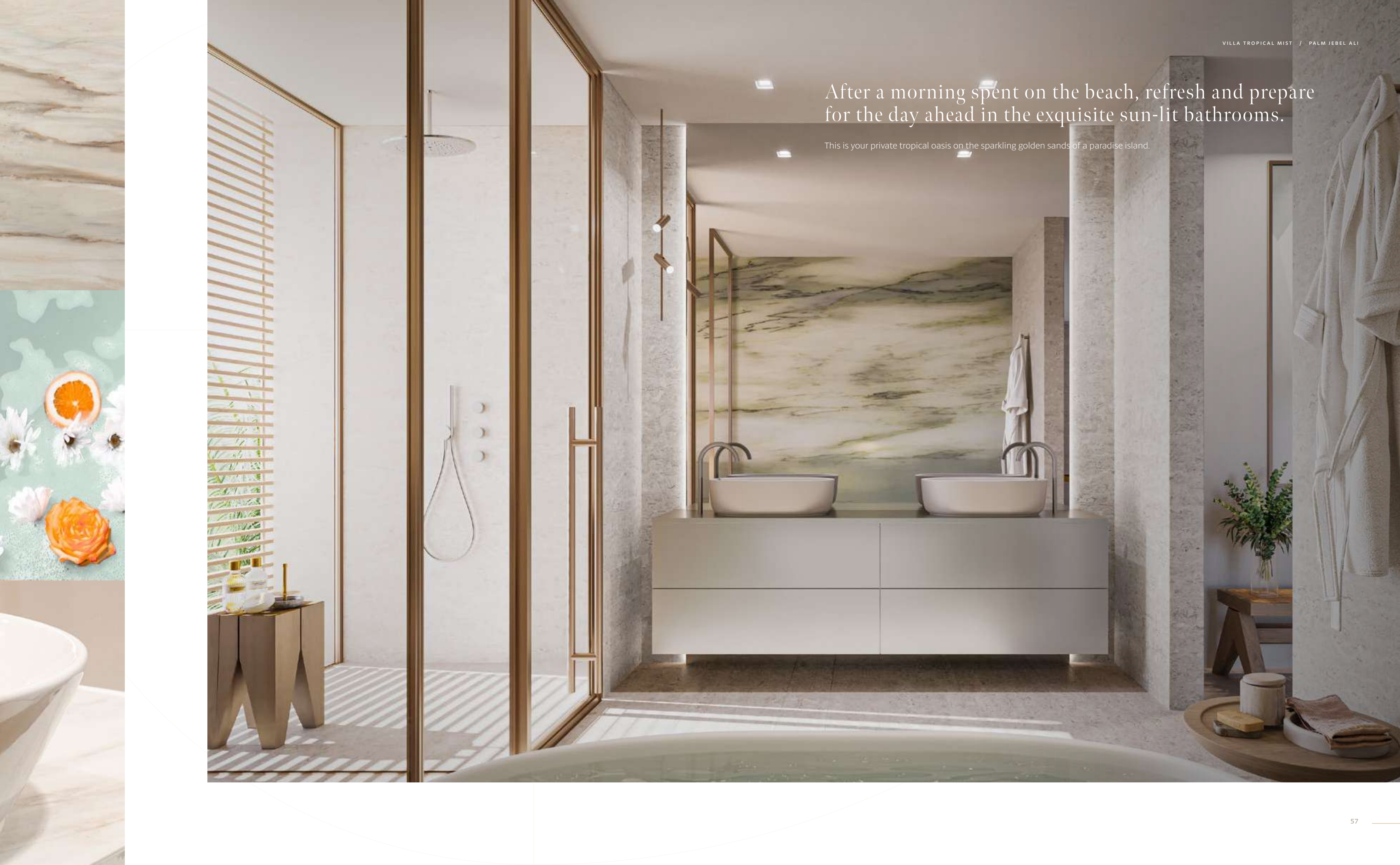
A HOME TO EXPLORE.

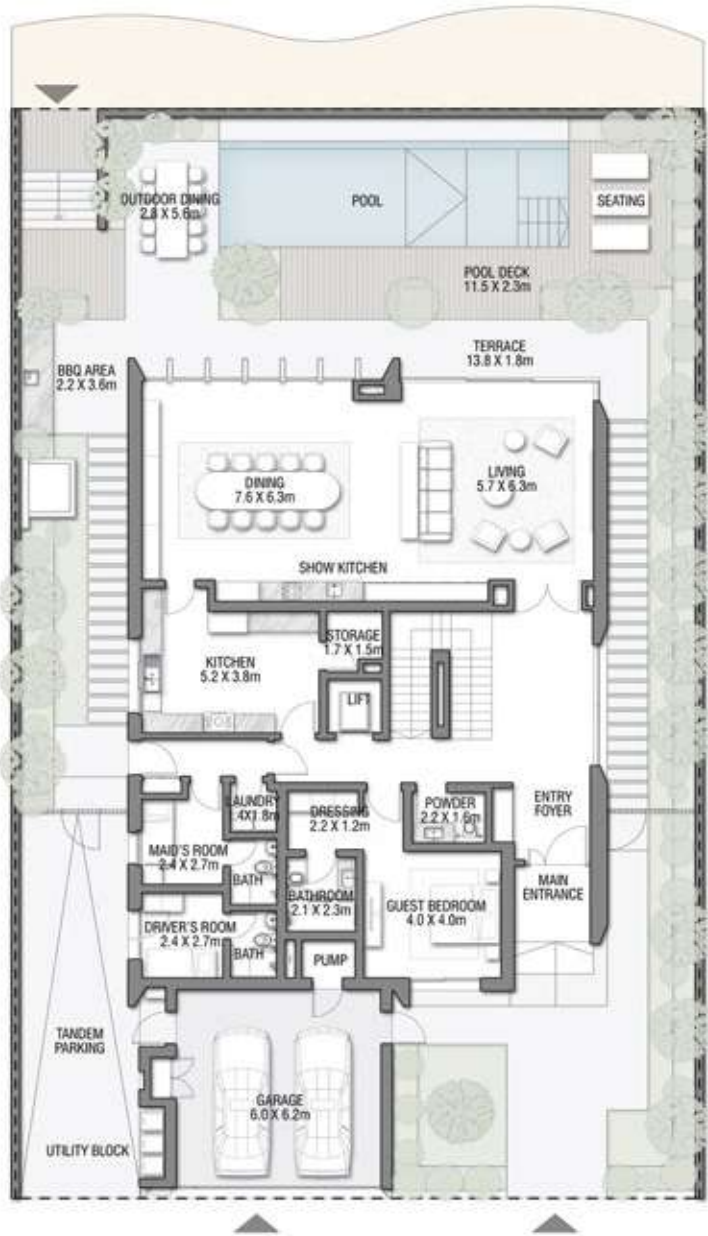
This home incorporates many natural elements into its design from the garden filled with tropical lower case and palm trees, to the spectacular sea views, and landscaped spaces, this is a home where happiness blooms.

The traditional design elements, including features to create private and intimate spaces, are balanced with contemporary light-filled rooms. As you explore this home, a beautiful series of spaces will unfold before you.

After a morning spent on the beach, refresh and prepare for the day ahead in the exquisite sun-lit bathrooms.

This is your private tropical oasis on the sparkling golden sands of a paradise island.





GROUND FLOOR



SECOND FLOOR



FIRST FLOOR

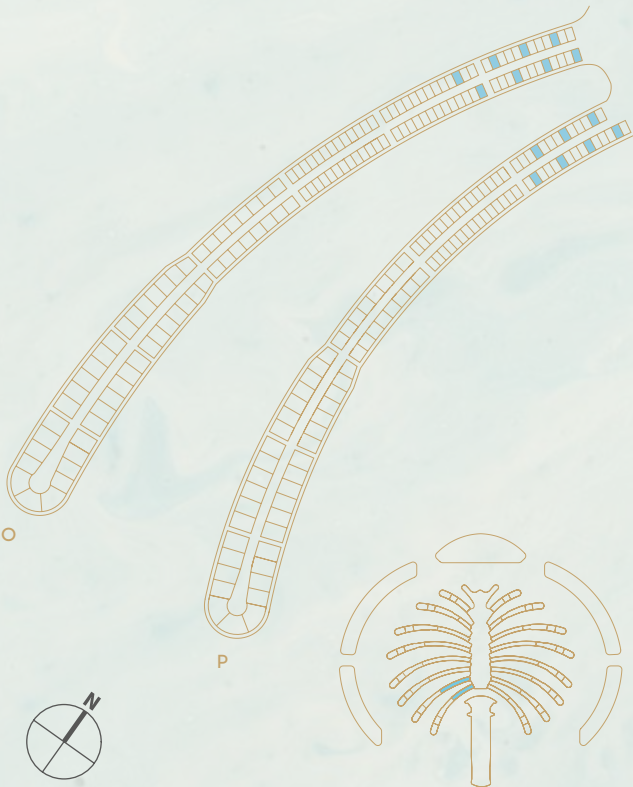
VILLA
TROPICAL
MIST

Beach Villas Collection

G + 2

6 BEDROOMS + FAMILY ROOM
+ ROOF LOUNGE AND TERRACE

FLOOR TYPE	SQ. M.	SQ. FT.
Ground Floor	249.34	2,683.87
Balcony / Terrace / Porch-GF	6.57	70.72
First Floor Area	242.72	2,612.62
Balcony / Terrace - First Floor	17.04	183.42
Second Floor Area	116.07	1,249.37
Balcony / Terrace - Second Floor	44.10	474.69
Garage - Covered	48.66	523.77
TOTAL BUILT-UP AREA	724.50	7,798.45
Garage with Pergola	0.0	0.0
TOTAL AREA	724.50	7,798.45



Numbers, square footage, and floor plans are approximate. Final dimensions, square footage and floor plans may vary and are subject to change without notice. The developer reserves the right to make revisions. Built-Up Area is measured in accordance with Dubai Land Department standards. Plans, artistic renderings, landscaping, and images are for illustrative purposes only and are subject to change without notice. Landscape shown is indicative and not provided by the developer. Pool layout and configurations shown on floor plans are for general illustrative purposes only and are not provided by the developer. Pool option will be available for buyer at time of purchase for an additional fee.

\ INFO@NAKHEEL.COM
\ 800 NAKHEEL

T H E B E A C H C O L L E C T I O N

**PALM
JEBEL ALI
NAKHEEL**



