

PARK VIEWS RESIDENCES TOWER A

AN ELEVATED URBAN LIVING EXPERIENCE
IN THE HEART OF DUBAI.

LUXURY IN EVERY QUARTER.

Welcome to Park Views Residences, Tower A - a luxurious freehold development that's part of the Wasl1 mixed-use master plan. Featuring a range of elegantly designed apartments, the tower brings you a wealth of premium amenities and every comfort a discerning home owner could ask for. It's time to experience a sophisticated lifestyle unlike any other.



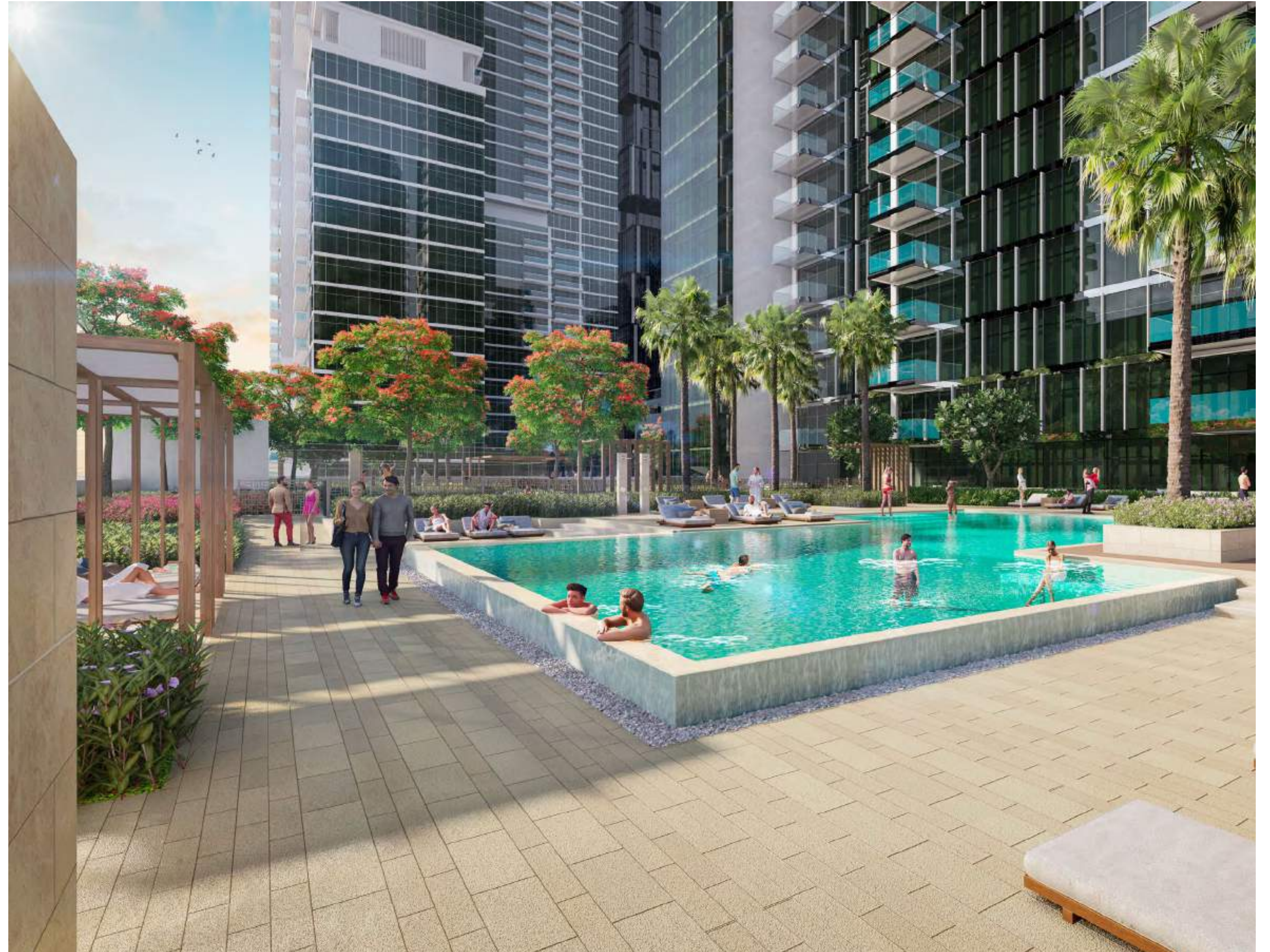
NOT JUST A HOME, A LUXURY STATEMENT.

Everything about the apartments at Park Views Residences, Tower A spells luxury. From the impeccable interior finishes, the spacious airy rooms to the breathtaking views of Zabeel Park, the attention to detail is evident in every aspect of the home units that range from 1 to 4-BR.



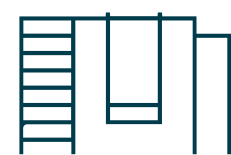
THE BEST OF TWO WORLDS.

Towering right in the heart of picturesque Zabeel, the Park Views Residences development boasts of excellent connectivity with prominent destinations in Dubai, while offering a lifestyle of exclusivity and convenience.



NEVER FAR FROM ANYTHING.

Living at Park Views Residences, Tower A means living at the centre of it all. Along with privileged access to a host of retail, dining, and leisure options, exclusive amenities such as a pool, gym and children’s play area are right at every resident’s doorstep.



Children’s play areas



Barbeque area



Swimming pool



Gym



Splash pad



Retail outlets



DESIGNED TO IMPRESS.
DESIGNED FOR COMFORT.



UNIT PLAN

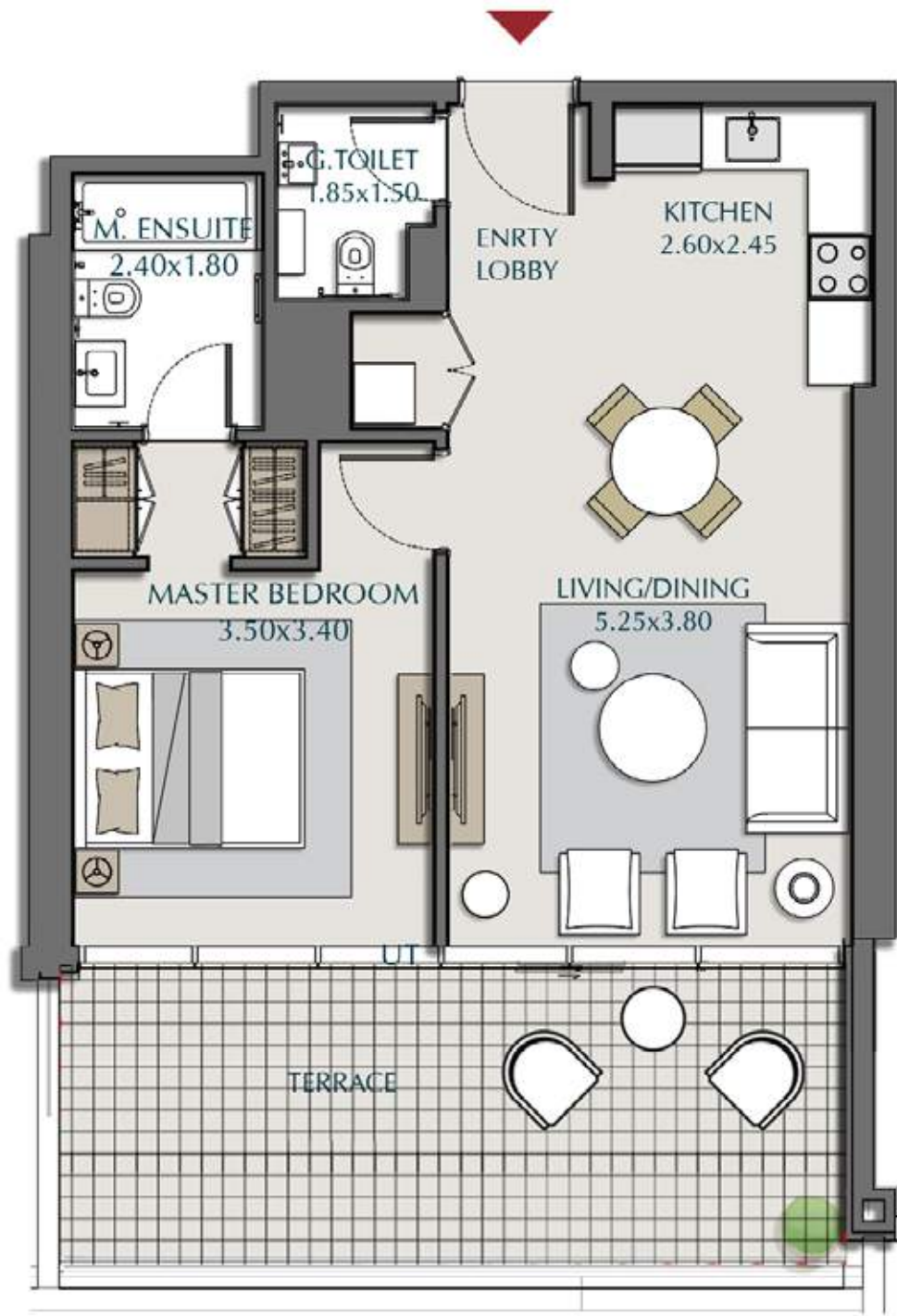
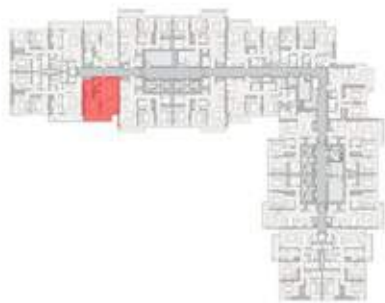
1-BEDROOM



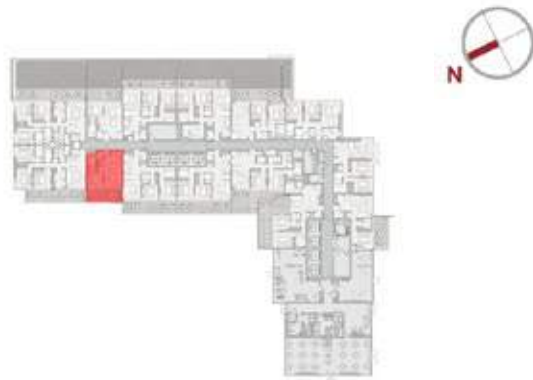
1BR-1A - 1- (503-1803,2103,2203-3603,504-1804,2104,2204-3604)		
SUITE AREA	654.12 ft ²	= 60.77 m ²
BALCONY AREA	93.54 ft ²	= 8.69 m ²
<hr/>		
TOTAL AREA	747.66 ft ²	= 69.46 m ²



LEVELS: (5TH TO 18TH, 21ST, 22ND TO 36TH)



1BR-1A - 2 - 404		
SUITE AREA	654.55 ft ²	= 60.81 m ²
TERRACE AREA	256.29 ft ²	= 23.81 m ²
<hr/>		
TOTAL AREA	910.84 ft ²	= 84.62 m ²



LEVELS: (4TH)

UNIT PLAN

2-BEDROOM



2BR-1A (412-1812,2112,2212 - 3612,3702,3802-4202)			
SUITE AREA	1046.68 ft ²	=	97.24 m ²
BALCONY AREA	73.52 ft ²	=	6.83 m ²
<hr/>			
TOTAL AREA	1120.20 ft ²	=	104.07 m ²



LEVELS: (4TH TO 18TH, 21ST, 22ND TO 36TH)



37TH , 38TH TO 42ND)



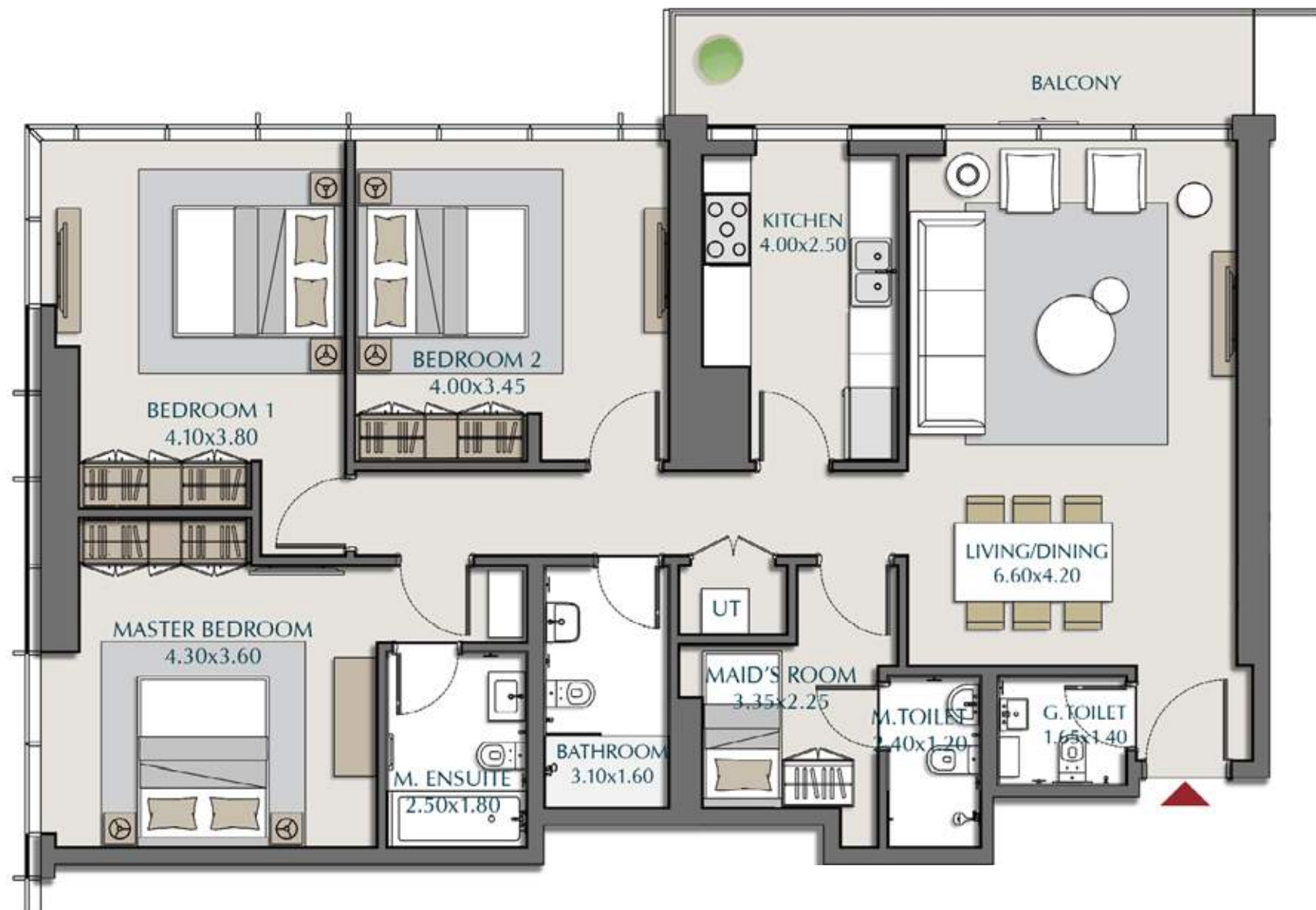
2BR-1B - 1- (509-1809, 2109, 2209-3609)			
SUITE AREA	986.84 ft ²	=	91.68 m ²
BALCONY AREA	79.65 ft ²	=	7.40 m ²
<hr/>			
TOTAL AREA	1066.49 ft ²	=	99.08 m ²



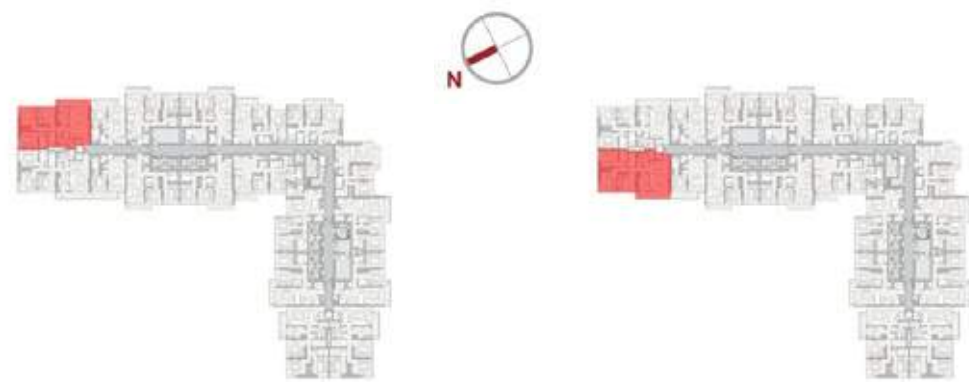
LEVELS: (5TH TO 18TH, 21ST, 22ND TO 36TH)

UNIT PLAN

3-BEDROOM



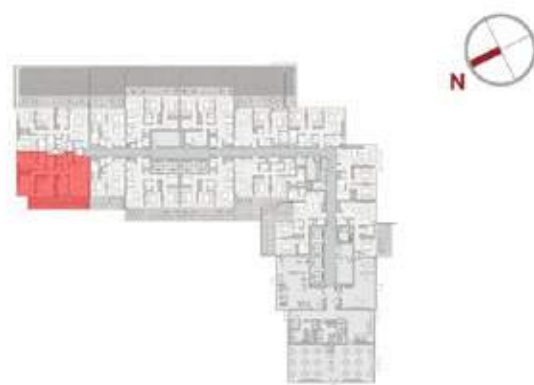
3BR-1A - 1 (501 - 1801, 2101 - 3601 , 502 - 1802, 2102-3602)	
SUITE AREA	1484.67 ft ² = 137.93 m ²
BALCONY AREA	113.56 ft ² = 10.55 m ²
<hr/>	
TOTAL AREA	1598.23 ft ² = 148.48 m ²



LEVELS: (5TH TO 18TH, 21ST , 22ND TO 36TH , 37TH , 38TH TO 42ND)



3BR-1A - 2 - 402	
SUITE AREA	1485.63 ft ² = 138.02 m ²
TERRACE AREA	443.90 ft ² = 41.24 m ²
<hr/>	
TOTAL AREA	1929.54 ft ² = 179.26 m ²



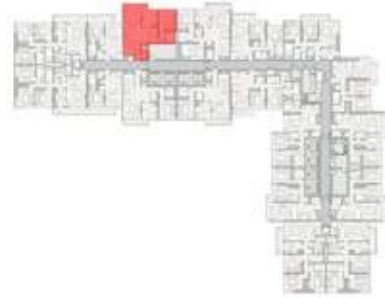
LEVELS: (4TH)

UNIT PLAN

4-BEDROOM



4BR-1A D1 (U) - 2105		
SUITE AREA	2132.76 ft ²	= 198.14 m ²
BALCONY AREA	67.70 ft ²	= 6.29 m ²
<hr/>		
TOTAL AREA	2200.47 ft ²	= 204.43 m ²



LEVELS: (21ST)



4BR-1A D2 (L) - 2005		
SUITE AREA	2132.76 ft ²	= 198.41 m ²
<hr/>		
TOTAL AREA	2132.76 ft ²	= 198.41 m ²



LEVELS: (20TH)

AN ADDRESS TO BE PROUD OF.

The serene Zabeel district of Dubai needs no introduction. Centrally located and easily accessible from every corner of the city, Zabeel is where old Dubai merges with the new. For the very reason, the district is exceptionally vibrant and has all major roads, metro lines and other transport facilities running right through it.





wasl

For more information, please call 800 (WASL)
Visit our website at wasl.ae or visit Wasl Experience Centre, Dubai UAE.
52 18C St - Al Safa - Al Safa 2 - Dubai 8:00 AM to 5:00 PM, Monday - Friday

Disclaimer: The renderings and visualizations contained in this brochure are provided for illustrative and marketing purposes. While the information provided is believed to be accurate and reliable at the time of printing, only the information contained in the final Sales and Purchase Agreement will have any legal effect