

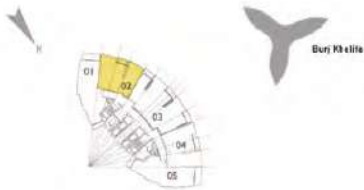
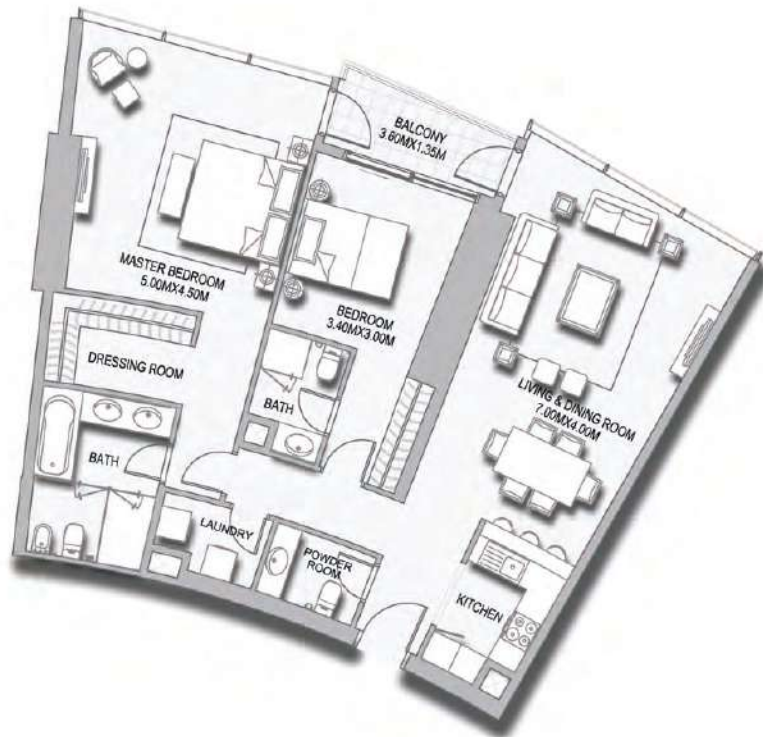


THE ADDRESS
RESIDENCE

FOUNTAIN VIEWS

2 Bedroom

UNIT 02
LEVELS 23, 25, 27, 29,
31, 33, 35, 37, 39, 41,
43 AND 45



SUITE AREA:	120.73 SQ.M (1299.5 SQ.FT)
BALCONY AREA:	5.65 SQ.M (60.8 SQ.FT)
TOTAL AREA:	126.38 SQ.M (1360.3 SQ.FT)

Disclaimer: 1. All room dimensions are measured to structural elements and exclude wall finishes and construction tolerances. 2. All dimensions have been provided by our consultant architects. 3. All materials, dimensions & drawings are approximate. Information is subject to change without notice. 4. Actual suite area may vary from the stated area. Drawings not to scale. The developer reserves the right to make revisions. 5. Calculation of suite area is measured as the area bounded by the centre line of demising or partition walls separating one unit from another unit, the exterior face of all exterior walls, and the exterior face of the corridor wall enclosing the adjoining unit. 6. Calculation of balcony area is measured as the area bounded by the centre line of demising or partition walls separating one unit from another unit, the outmost face of the enclosing guard and the external face of the unit adjoining the balcony. 7. The units are measured at typical floor in the building. Columns may vary in size depending on the floor level.



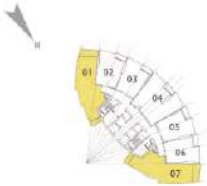
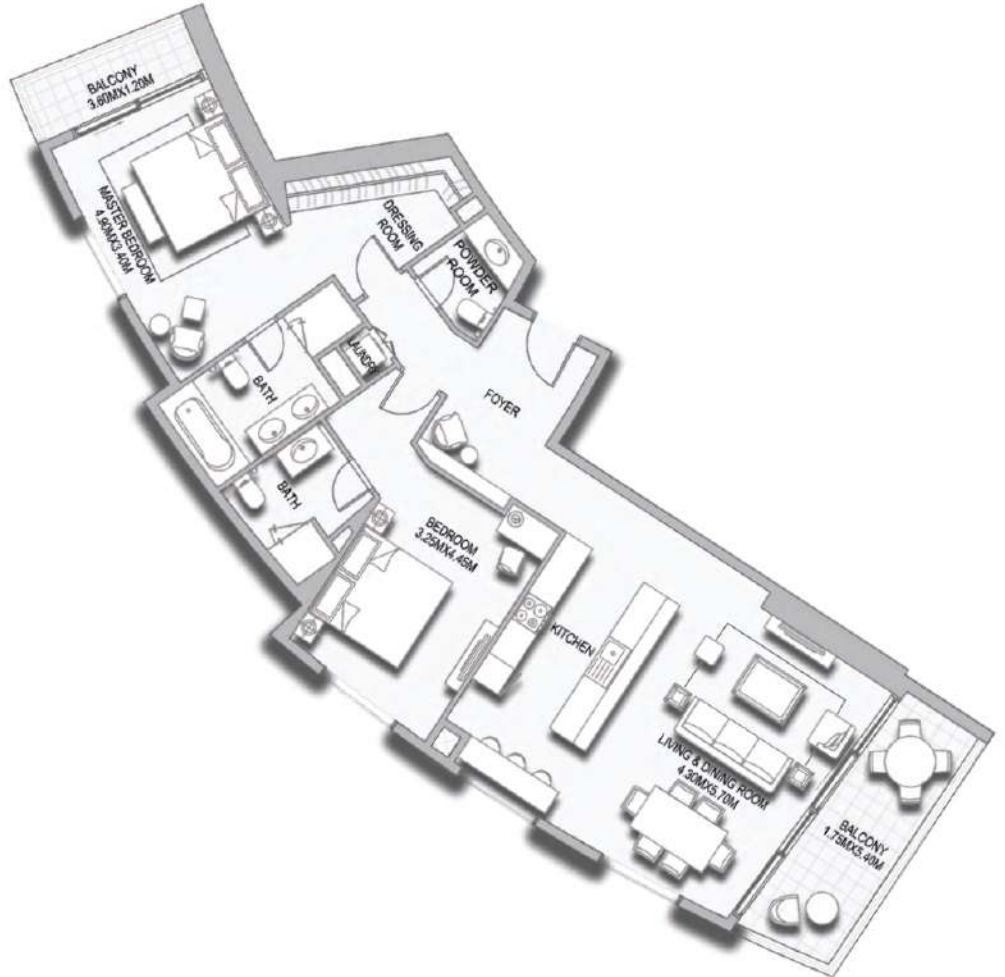
THE ADDRESS RESIDENCE

FOUNTAIN VIEWS

2 Bedroom

UNITS 01 AND 07
LEVELS 04, 06, 08, 10,
12, 14, 16, 18 AND 20

UNITS 01 AND 05
LEVELS 24, 26, 28, 30,
32, 34, 36, 38, 40, 42,
44, 46, 48, 50 AND 52



SUITE AREA:	124.79 SQ.M (1343.2 SQ.FT)
BALCONY AREA:	15.45 SQ.M (166.3 SQ.FT)
TOTAL AREA:	140.24 SQ.M (1509.5 SQ.FT)

Disclaimer: 1. All room dimensions are measured to structural elements and exclude wall finishes and construction tolerances. 2. All dimensions have been provided by our consultant architects. 3. All materials, dimensions & drawings are approximate. Information is subject to change without notice. 4. Actual suite area may vary from the stated area. Drawings not to scale. The developer reserves the right to make revisions. 5. Calculation of suite area is measured as the area bounded by the centre line of demising or partition walls separating one unit from another unit, the exterior face of all exterior walls, and the exterior face of the corridor wall enclosing the adjoining unit. 6. Calculation of balcony area is measured as the area bounded by the centre line of demising or partition walls separating one unit from another unit, the outmost face of the enclosing guard and the external face of the unit adjoining the balcony. 7. The units are measured at typical floor in the building. Columns may vary in size depending on the floor level.



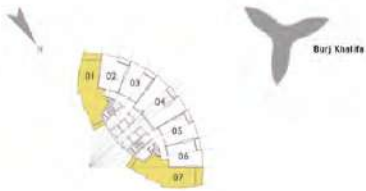
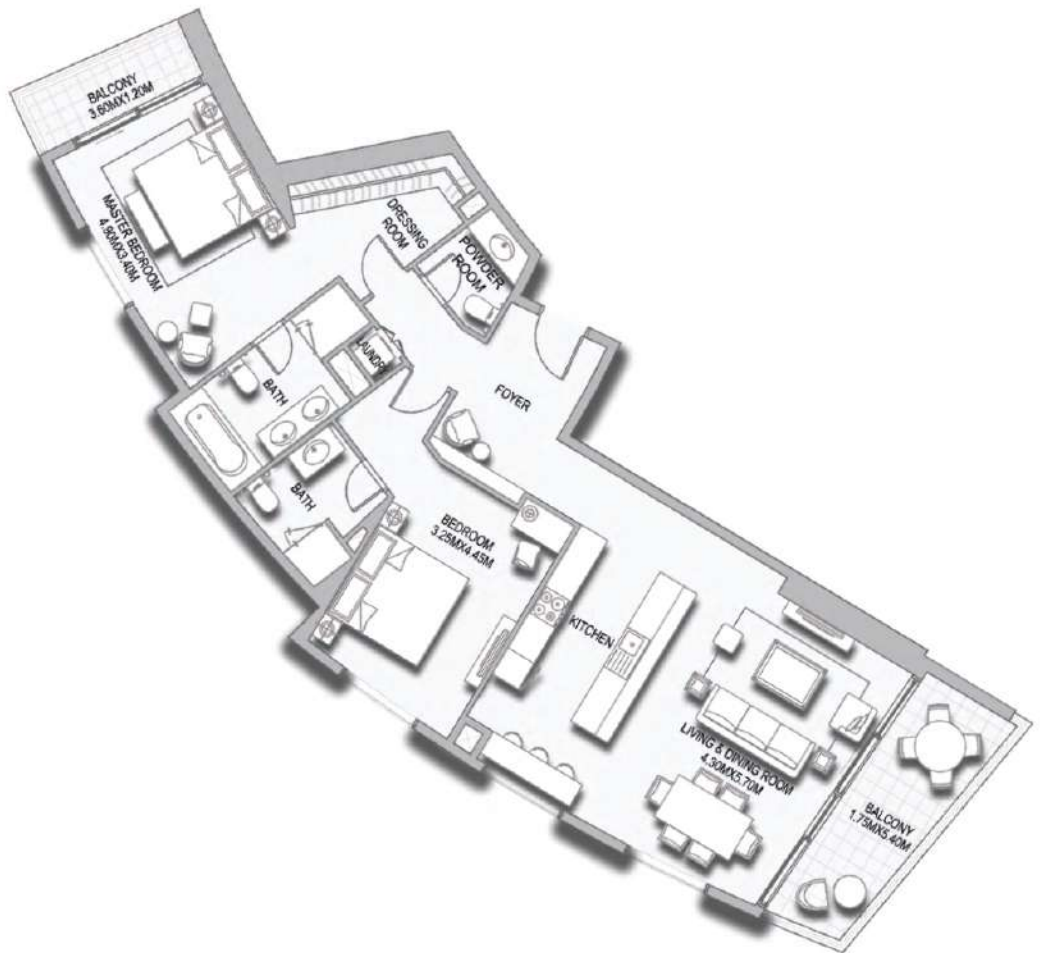
THE ADDRESS RESIDENCE

FOUNTAIN VIEWS

2 Bedroom

UNITS 01 AND 07
LEVELS 03, 05, 07,
09, 11, 13, 15, 17,
19 AND 21

UNITS 01 AND 05
LEVELS 23, 25, 27, 29,
31, 33, 35, 37, 39, 41,
43, 45, 49, 51 AND 53



SUITE AREA:	124.51 SQ.M (1340.2 SQ.FT)
BALCONY AREA:	15.55 SQ.M (167.4 SQ.FT)
TOTAL AREA:	140.06 SQ.M (1507.6 SQ.FT)

Disclaimer: 1. All room dimensions are measured to structural elements and exclude wall finishes and construction tolerances. 2. All dimensions have been provided by our consultant architects. 3. All materials, dimensions & drawings are approximate. Information is subject to change without notice. 4. Actual suite area may vary from the stated area. Drawings not to scale. The developer reserves the right to make revisions. 5. Calculation of suite area is measured as the area bounded by the centre line of demising or partition walls separating one unit from another unit, the exterior face of all exterior walls, and the exterior face of the corridor wall enclosing the adjoining unit. 6. Calculation of balcony area is measured as the area bounded by the centre line of demising or partition walls separating one unit from another unit, the outmost face of the enclosing guard and the external face of the unit adjoining the balcony. 7. The units are measured at typical floor in the building. Columns may vary in size depending on the floor level.

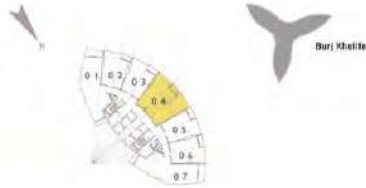
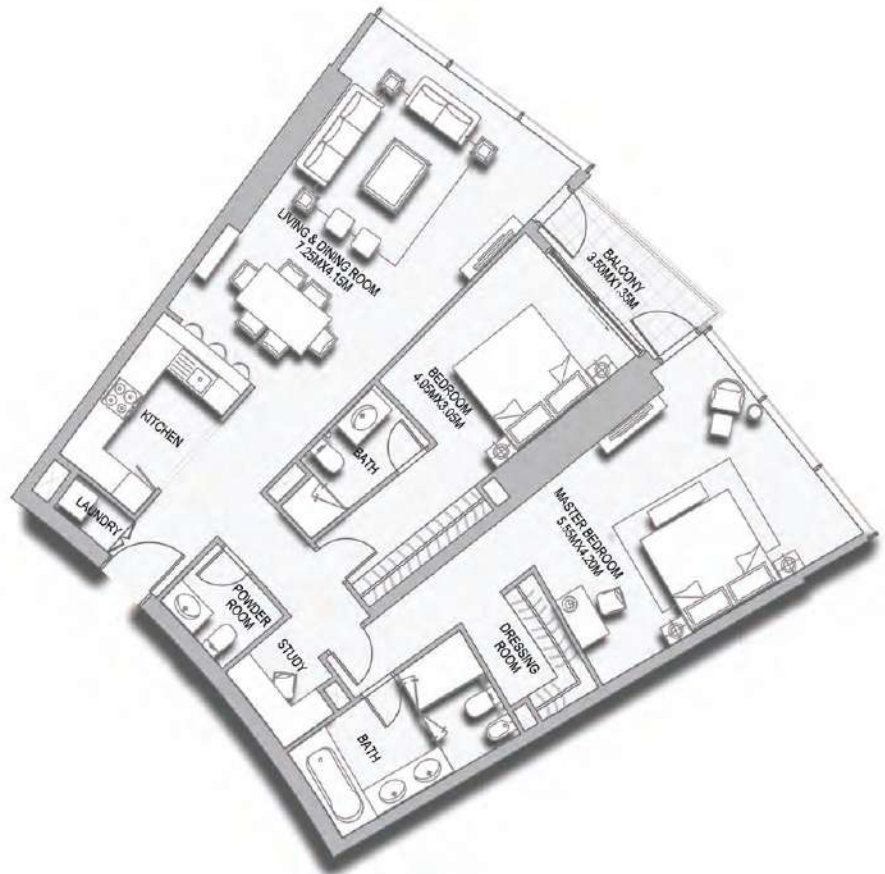


THE ADDRESS RESIDENCE

FOUNTAIN VIEWS

2 Bedroom

UNIT 04
LEVELS 04, 06, 08, 10,
12, 14, 16, 18 AND 20



SUITE AREA:	135.73 SQ.M (1461.0 SQ.FT)
BALCONY AREA:	5.36 SQ.M (57.7 SQ.FT)
TOTAL AREA:	141.09 SQ.M (1518.7 SQ.FT)

Disclaimer: 1. All room dimensions are measured to structural elements and exclude wall finishes and construction tolerances. 2. All dimensions have been provided by our consultant architects. 3. All materials, dimensions & drawings are approximate. Information is subject to change without notice. 4. Actual suite area may vary from the stated area. Drawings not to scale. The developer reserves the right to make revisions. 5. Calculation of suite area is measured as the area bounded by the centre line of demising or partition walls separating one unit from another unit, the exterior face of all exterior walls, and the exterior face of the corridor wall enclosing the adjoining unit. 6. Calculation of balcony area is measured as the area bounded by the centre line of demising or partition walls separating one unit from another unit, the outmost face of the enclosing guard and the external face of the unit adjoining the balcony. 7. The units are measured at typical floor in the building. Columns may vary in size depending on the floor level.

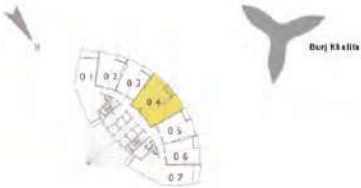
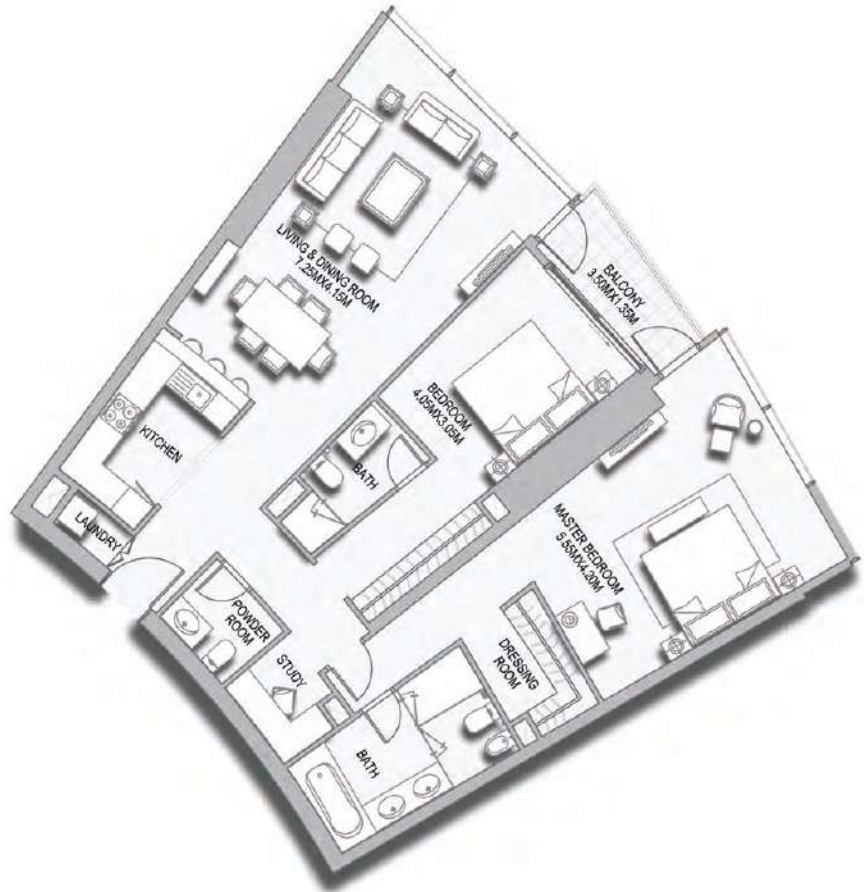


THE ADDRESS RESIDENCE

FOUNTAIN VIEWS

2 Bedroom

UNIT 04
LEVELS 03, 05, 07,
09, 11, 13, 15, 17,
19 AND 21



SUITE AREA:	135.48 SQ.M (1458.3 SQ.FT)
BALCONY AREA:	5.36 SQ.M (57.7 SQ.FT)
TOTAL AREA:	140.84 SQ.M (1516.0 SQ.FT)

Disclaimer: 1. All room dimensions are measured to structural elements and exclude wall finishes and construction tolerances. 2. All dimensions have been provided by our consultant architects. 3. All materials, dimensions & drawings are approximate. Information is subject to change without notice. 4. Actual suite area may vary from the stated area. Drawings not to scale. The developer reserves the right to make revisions. 5. Calculation of suite area is measured as the area bounded by the centre line of demising or partition walls separating one unit from another unit, the exterior face of all exterior walls, and the exterior face of the corridor wall enclosing the adjoining unit. 6. Calculation of balcony area is measured as the area bounded by the centre line of demising or partition walls separating one unit from another unit, the outmost face of the enclosing guard and the external face of the unit adjoining the balcony. 7. The units are measured at typical floor in the building. Columns may vary in size depending on the floor level.

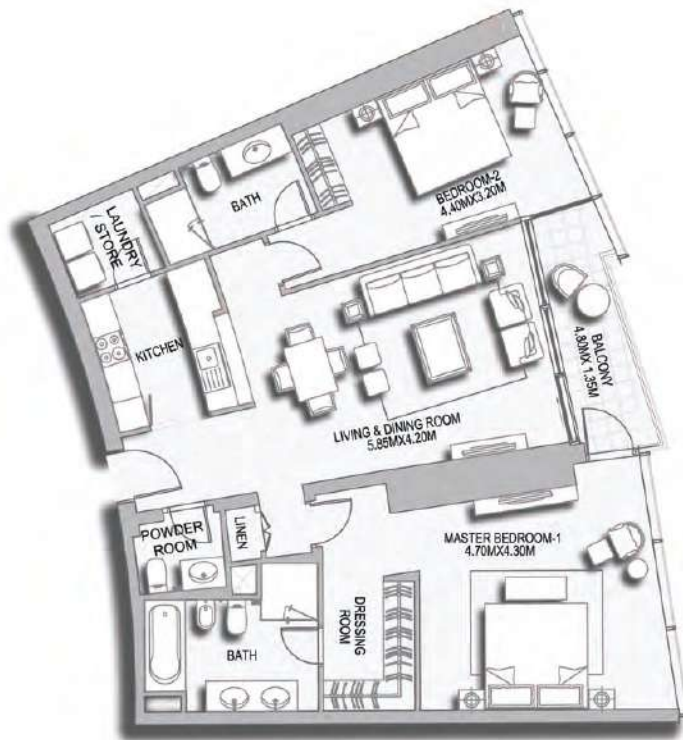
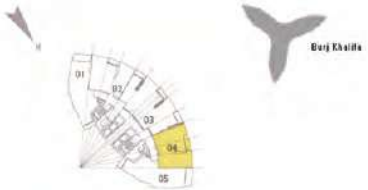


THE ADDRESS RESIDENCE

FOUNTAIN VIEWS

2 Bedroom

UNIT 04
LEVELS 24, 26, 28,
30, 32, 34, 36, 38, 40,
42, 44 AND 46



SUITE AREA:	119.54 SQ.M (1286.7 SQ.FT)
BALCONY AREA:	7.25 SQ.M (78.0 SQ.FT)
TOTAL AREA:	126.79 SQ.M (1364.7 SQ.FT)

Disclaimer: 1. All room dimensions are measured to structural elements and exclude wall finishes and construction tolerances. 2. All dimensions have been provided by our consultant architects. 3. All materials, dimensions & drawings are approximate. Information is subject to change without notice. 4. Actual suite area may vary from the stated area. Drawings not to scale. The developer reserves the right to make revisions. 5. Calculation of suite area is measured as the area bounded by the centre line of demising or partition walls separating one unit from another unit, the exterior face of all exterior walls, and the exterior face of the corridor wall enclosing the adjoining unit. 6. Calculation of balcony area is measured as the area bounded by the centre line of demising or partition walls separating one unit from another unit, the outmost face of the enclosing guard and the external face of the unit adjoining the balcony. 7. The units are measured at typical floor in the building. Columns may vary in size depending on the floor level.

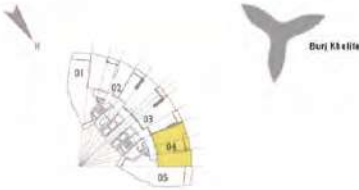
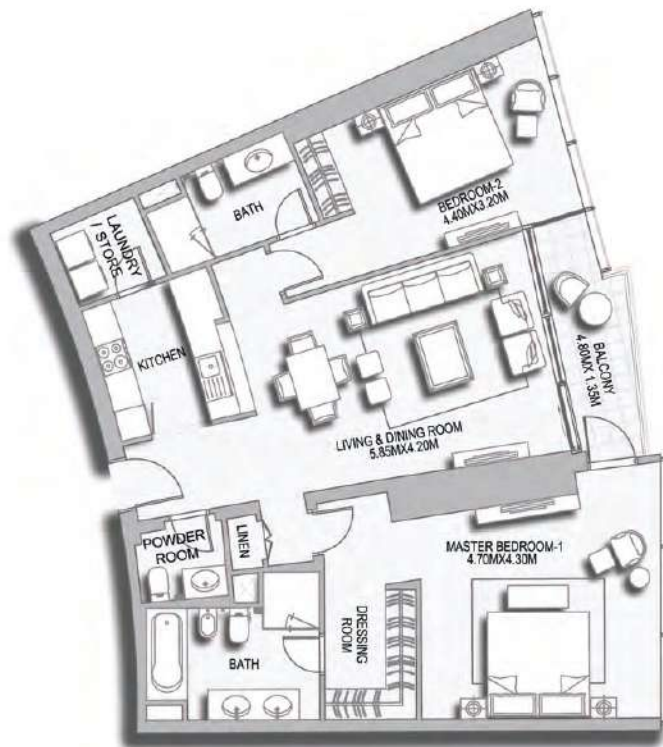


THE ADDRESS RESIDENCE

FOUNTAIN VIEWS

2 Bedroom

UNIT 04
LEVELS 23, 25, 27,
29, 31, 33, 35, 37,
39, 41, 43 AND 45



SUITE AREA:	119.56 SQ.M (1286.9 SQ.FT)
BALCONY AREA:	7.23 SQ.M (77.8 SQ.FT)
TOTAL AREA:	126.79 SQ.M (1364.7 SQ.FT)

Disclaimer: 1. All room dimensions are measured to structural elements and exclude wall finishes and construction tolerances. 2. All dimensions have been provided by our consultant architects. 3. All materials, dimensions & drawings are approximate. Information is subject to change without notice. 4. Actual suite area may vary from the stated area. Drawings not to scale. The developer reserves the right to make revisions. 5. Calculation of suite area is measured as the area bounded by the centre line of demising or partition walls separating one unit from another unit, the exterior face of all exterior walls, and the exterior face of the corridor wall enclosing the adjoining unit. 6. Calculation of balcony area is measured as the area bounded by the centre line of demising or partition walls separating one unit from another unit, the outmost face of the enclosing guard and the external face of the unit adjoining the balcony. 7. The units are measured at typical floor in the building. Columns may vary in size depending on the floor level.

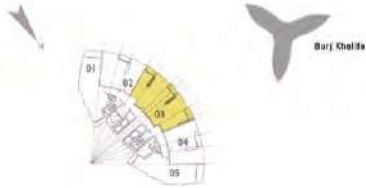
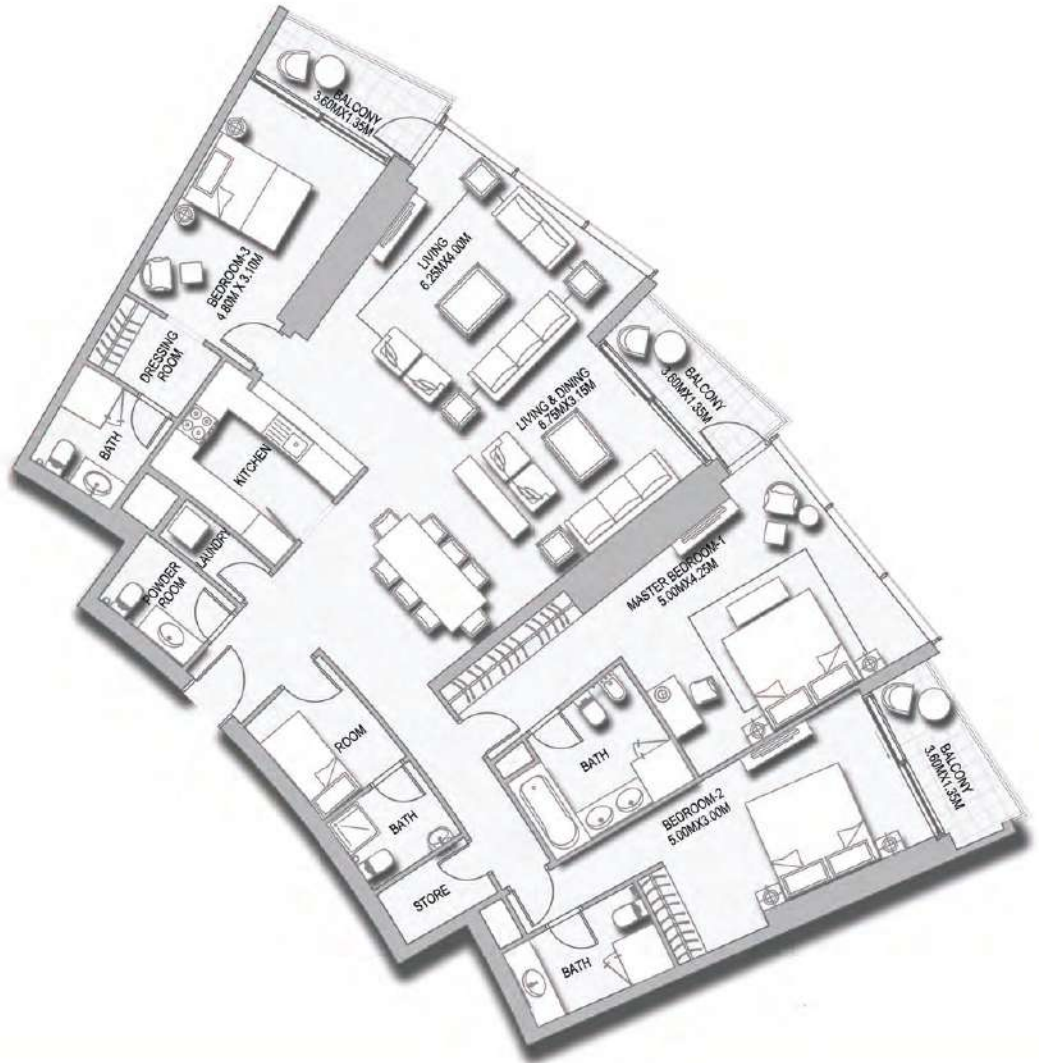


THE ADDRESS RESIDENCE

FOUNTAIN VIEWS

3 Bedroom

UNIT 03
LEVELS 24, 26, 28, 30,
32, 34, 36, 38, 40, 42,
44, 46, 48, 50 AND 52



SUITE AREA:	192.99 SQ.M (2077.3 SQ.FT)
BALCONY AREA:	15.63 SQ.M (168.2 SQ.FT)
TOTAL AREA:	208.62 SQ.M (2245.5 SQ.FT)

Disclaimer: 1. All room dimensions are measured to structural elements and exclude wall finishes and construction tolerances. 2. All dimensions have been provided by our consultant architects. 3. All materials, dimensions & drawings are approximate. Information is subject to change without notice. 4. Actual suite area may vary from the stated area. Drawings not to scale. The developer reserves the right to make revisions. 5. Calculation of suite area is measured as the area bounded by the centre line of demising or partition walls separating one unit from another unit, the exterior face of all exterior walls, and the exterior face of the corridor wall enclosing the adjoining unit. 6. Calculation of balcony area is measured as the area bounded by the centre line of demising or partition walls separating one unit from another unit, the outmost face of the enclosing guard and the external face of the unit adjoining the balcony. 7. The units are measured at typical floor in the building. Columns may vary in size depending on the floor level.

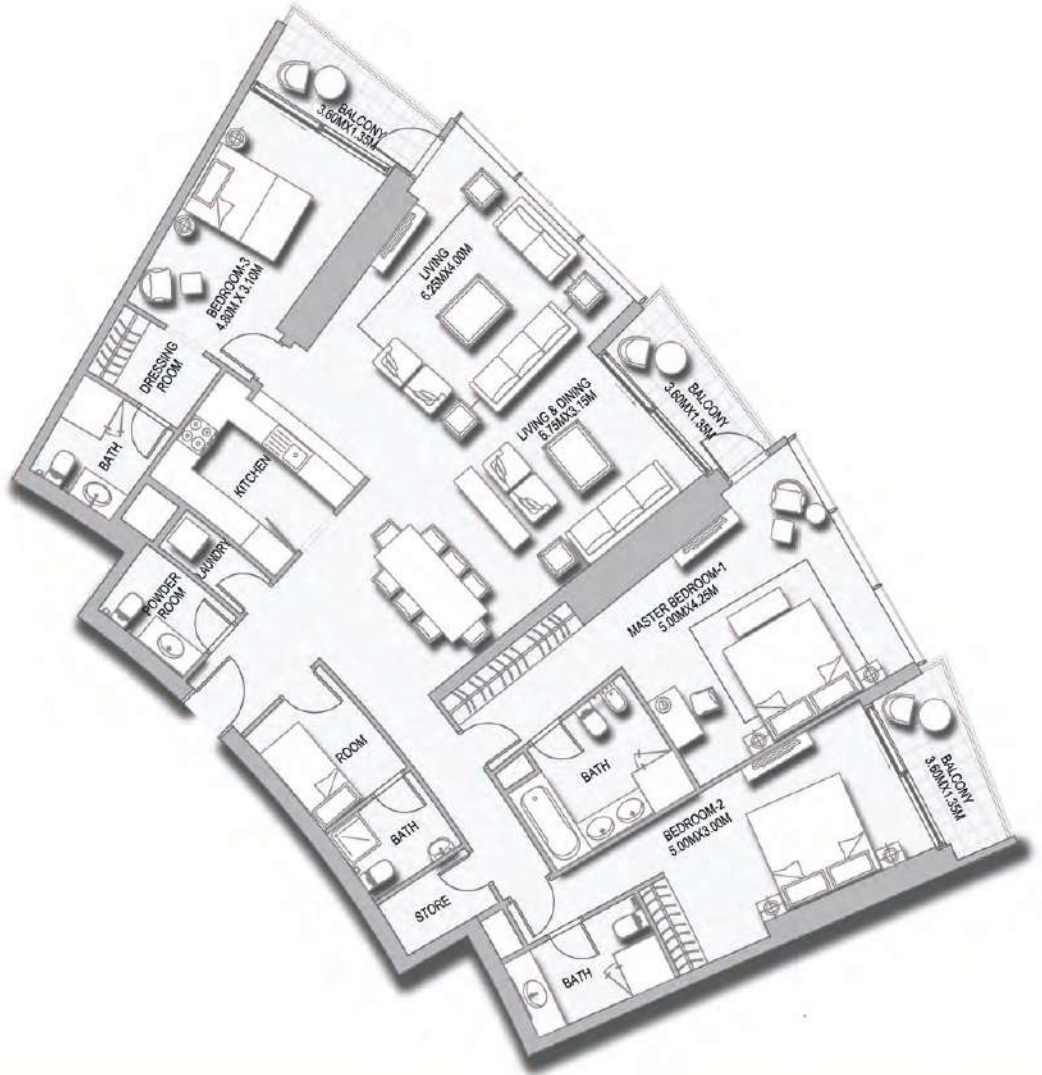


THE ADDRESS RESIDENCE

FOUNTAIN VIEWS

3 Bedroom

UNIT 03
LEVELS 23, 25, 27, 29,
31, 33, 35, 37, 39, 41,
43, 45, 49, 51 AND 53



SUITE AREA:	192.99 SQ.M (2077.3 SQ.FT)
BALCONY AREA:	15.63 SQ.M (168.2 SQ.FT)
TOTAL AREA:	208.62 SQ.M (2245.5 SQ.FT)

Disclaimer: 1. All room dimensions are measured to structural elements and exclude wall finishes and construction tolerances. 2. All dimensions have been provided by our consultant architects. 3. All materials, dimensions & drawings are approximate. Information is subject to change without notice. 4. Actual suite area may vary from the stated area. Drawings not to scale. The developer reserves the right to make revisions. 5. Calculation of suite area is measured as the area bounded by the centre line of demising or partition walls separating one unit from another unit, the exterior face of all exterior walls, and the exterior face of the corridor wall enclosing the adjoining unit. 6. Calculation of balcony area is measured as the area bounded by the centre line of demising or partition walls separating one unit from another unit, the outmost face of the enclosing guard and the external face of the unit adjoining the balcony. 7. The units are measured at typical floor in the building. Columns may vary in size depending on the floor level.

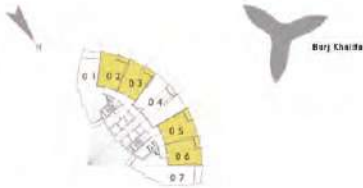
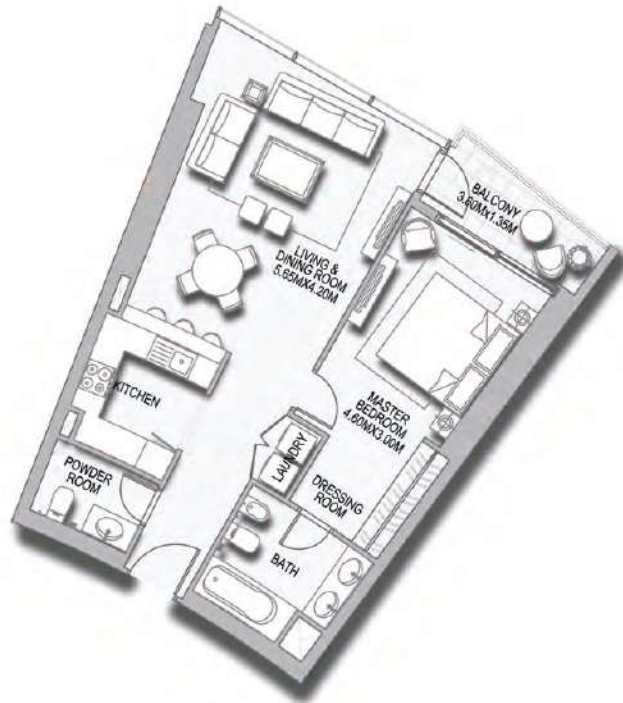


THE ADDRESS RESIDENCE

FOUNTAIN VIEWS

1 Bedroom

UNITS 02, 03, 05
AND 06
LEVELS 03, 05, 07,
09, 11, 13, 15, 17,
19 AND 21



SUITE AREA:	74.62 SQ.M (803.2 SQ.FT)
BALCONY AREA:	5.30 SQ.M (57.0 SQ.FT)
TOTAL AREA:	79.92 SQ.M (860.2 SQ.FT)

Disclaimer: 1. All room dimensions are measured to structural elements and exclude wall finishes and construction tolerances. 2. All dimensions have been provided by our consultant architects. 3. All materials, dimensions & drawings are approximate. Information is subject to change without notice. 4. Actual suite area may vary from the stated area. Drawings not to scale. The developer reserves the right to make revisions. 5. Calculation of suite area is measured as the area bounded by the centre line of demising or partition walls separating one unit from another unit, the exterior face of all exterior walls, and the exterior face of the corridor wall enclosing the adjoining unit. 6. Calculation of balcony area is measured as the area bounded by the centre line of demising or partition walls separating one unit from another unit, the outmost face of the enclosing guard and the external face of the unit adjoining the balcony. 7. The units are measured at typical floor in the building. Columns may vary in size depending on the floor level.



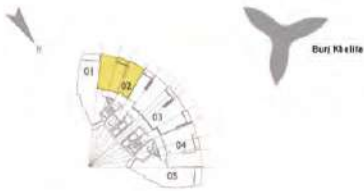
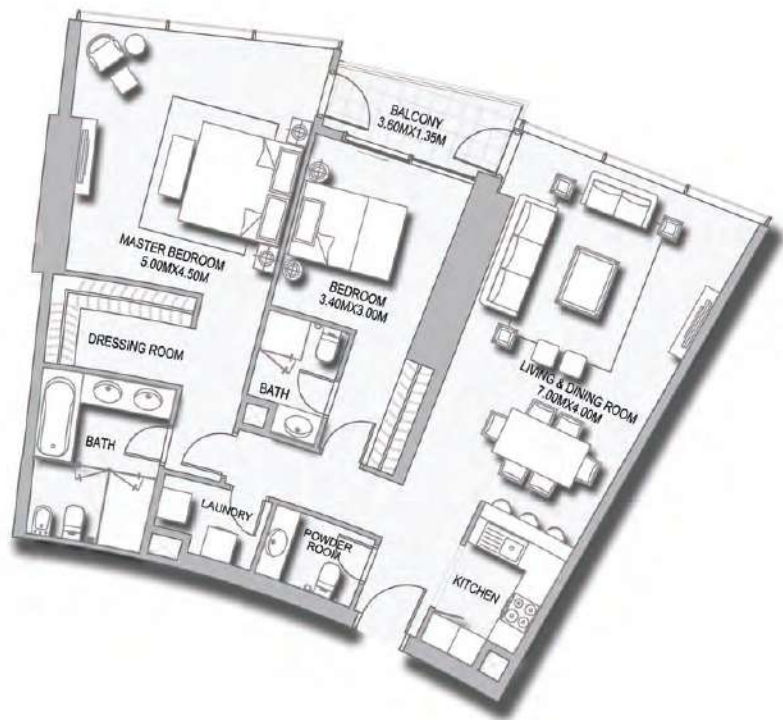
THE ADDRESS

RESIDENCE

FOUNTAIN VIEWS

2 Bedroom

UNIT 02
LEVELS 24, 26, 28, 30,
32, 34, 36, 38, 40, 42,
44 AND 46



SUITE AREA:	121.07 SQ.M (1303.2 SQ.FT)
BALCONY AREA:	5.54 SQ.M (59.6 SQ.FT)
TOTAL AREA:	126.61 SQ.M (1362.8 SQ.FT)

Disclaimer: 1. All room dimensions are measured to structural elements and exclude wall finishes and construction tolerances. 2. All dimensions have been provided by our consultant architects. 3. All materials, dimensions & drawings are approximate. Information is subject to change without notice. 4. Actual suite area may vary from the stated area. Drawings not to scale. The developer reserves the right to make revisions. 5. Calculation of suite area is measured as the area bounded by the centre line of demising or partition walls separating one unit from another unit, the exterior face of all exterior walls, and the exterior face of the corridor wall enclosing the adjoining unit. 6. Calculation of balcony area is measured as the area bounded by the centre line of demising or partition walls separating one unit from another unit, the outmost face of the enclosing guard and the external face of the unit adjoining the balcony. 7. The units are measured at typical floor in the building. Columns may vary in size depending on the floor level.