



THE ADDRESS
HOTELS + RESORTS

THE ADDRESS RESIDENCES

WHERE *life* HAPPENS



Welcome

The Address Residences. A global group of lavish properties, united by themes of inspiration and relaxation. Our ethos is simple: to give you the ultimate in city living. It is a philosophy that flows through everything we do, from our iconic locations and business facilities to our sublime comfort and modern design fittings and furnishings.

To stay at The Address Residences is to share this outlook. Five-star facilities are at your fingertips, concierge service is only ever a call away and world-class dining is on your doorstep. But above all, your Residence is also your home, a reflection of your style, your likes, loves and lifestyle.

These are spaces you can call your own.

The Address Hotels + Resorts. Where life happens.



Welcoming



Sophisticated



Sociable



Refined

The Address Downtown Dubai

The Address Downtown Dubai, at 63 storeys, offers sweeping city views toward the world's tallest tower Burj Khalifa. Located a convenient 15 minutes from Dubai International Airport, the award winning hotel is within walking distance to the most renowned landmarks including the impressive The Dubai Fountain and The Dubai Mall, while still being connected to the Financial Centre and business hubs of the city.

Every one of its 626 serviced residences ranging from sleek studios to four-bedroom penthouses, exude the utmost style and opulence. Available for short and long term stays, these residences combine all the ease and comfort of a five-star hotel, with the independence and flexibility of your own apartment.

The Address Downtown Dubai. Where life happens.





Four-bedroom Penthouse



Four-bedroom Penthouse



One-bedroom Apartment

Amenities

LOCATION. The Address Downtown Dubai is the perfect base for the business traveller: seconds away from the spectacular Burj Khalifa, the world's tallest tower, 15 minutes from Dubai International Airport and close to the Dubai International Financial Centre (DIFC), Business Bay, Dubai World Trade Centre, Dubai Convention Centre and Sheikh Zayed Road. The property is fringed by landscaped gardens, iconic landmarks and is adjacent to The Dubai Mall, the world's largest shopping and entertainment destination.

LIVING. Our living spaces are all furnished, with windows looking out across stunning views. The subtle colour palette is complemented by high-grade marble tile flooring, while concealed lights in the coffered ceilings create a gorgeous soft ambience.

DINING. Every apartment has its own open-plan kitchen, the perfect environment for entertaining and casual dining. Cabinets are crafted from warm timber, worktops are hewn from premium imported granite and the appliances are of the highest quality. The solid feel extends from the ceramic floor to the tops of the fitted cabinets.

BEDROOMS. Each one of our bedrooms is individually designed to make the most of the light, space and orientation. With full-height windows, hand-crafted joinery, deep pile carpets and imported furnishings, every room has a majestic, harmonious feel.

BATHROOMS. With their finessed flowing lines and modern fixtures and fittings, our bathrooms are designed to relax and revive. There is the solid touch of finished marble and high-grade ceramic flooring, the sleek wall finishes enhanced by decorative accents, and the enlivening feel of premium quality, powerful showers.

ARCHITECTURE. The Address Downtown Dubai has its own distinctive grandeur and elegance. The façade draws on art deco influences and pioneering post-modern techniques, while inside the building has an air of peace and tranquillity.

INTERIORS. The award winning interiors are inspired by the dramatic and diverse landscapes of the gulf region. The rugged mountains of the Hajar, the golden dunes of the desert, the deep hues of the Arabian sea and the reds, golds and oranges of the sunsets.

Features

Beautifully appointed furnished apartments complete with latest and modern appliances

Fully equipped gourmet kitchen – refrigerator, stove, oven, microwave, dishwasher and kitchenware

Washer/dryer, security safe, storage

LCD TV with International channels

Built in wardrobe, storage and shelf space

Services

Private Residences entrance

Welcome amenities

24-hour concierge service

24-hour business lounge

24-hour room service

Service Plus is a single point of contact for all resident needs

Housekeeping and laundry service

Priority restaurant reservations at hotel's dining outlets

Simple account-based payment available in the spa and restaurants

Complimentary wireless Internet access in apartments and public areas

Fully equipped fitness centre

Spa and beauty salon

1000 sq m outdoor swimming area

Library stocked up with international best sellers

Private limousine transfers available upon request

Qix Kids Club for our little guests



Neos Sky Lounge



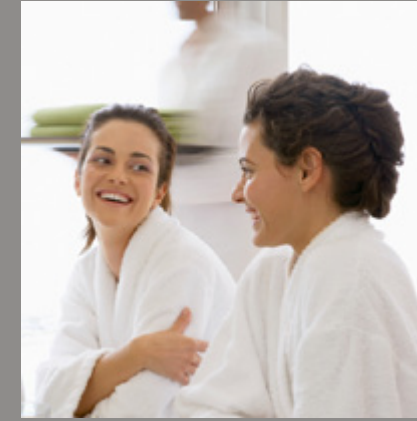
Hukama



Fazaris



Treatment Room



The Spa



Bajah

Restaurants & Lounges

The Address takes dining to a new place. From casual celebrations to exquisite fine dining, we offer a myriad of culinary experiences.

HUKAMA. For an upbeat and sophisticated evening, Hukama, our signature Chinese restaurant serves traditional provincial cuisines with contemporary presentations. Chinois chic | 6th floor | 7.00pm to 11.00pm every evening.

CALABAR. The vibrant and colourful Calabar lounge is a hip and trendy place to be seen. The lively terrace overlooking Burj Khalifa is the perfect place for sundowners - tuck into exotic nibbles and signature cocktails. Latin night-lounge | Lobby Level | Tapas and cocktails | 6.00pm to 2.30am every evening.

NEOS. The striking sky lounge is definitely a destination venue and a 'must see' place for those looking for an upscale yet retro experience. 63rd floor, access from the main lobby | 6.00pm to 2.30am every evening.

THE CIGAR LOUNGE. Evoking Charisma and magnetism, The Cigar Lounge brings back classic chic brushed with modern influences. Savour the finest cigars with perfectly paired beverages in this elegant setting whilst you watch the sun descend over Downtown Dubai.

SAHA CAFÉ. The contemporary lake-side coffee shop of The Address Downtown Dubai. With a lively setting and decor, Saha Café offers picturesque views of Burj Khalifa, the world's tallest tower and The Dubai Fountain. Lakeside | 4.00pm to 12 midnight daily.

RISALA. Lays on an elegant breakfast, lunch or dinner as well as fragrant English or Arabic tea. Light meals, afternoon tea and Arabic mezze. Lobby Lounge | Contemporary chic | 6.00am to 2.00am daily.

FAZARIS. A restaurant with a difference offering a cosmopolitan blend of Asian, Indian, Arabic and Mediterranean cuisines prepared at live cooking stations. Lobby Level | breakfast from 6.30am to 11am. Lunch is served from 12 noon to 3.30pm and dinner from 6.30pm to midnight.

ZETA. A refreshing accompaniment to a lazy day in the sun. An international menu is served on the sun lounges or in the relaxing, custom-designed terrace. Poolside Restaurant | Lobby Level | Open from Saturday to Wednesday, from 12.00pm to 10.00pm. Thursday and Friday, from 12.00pm to 2.00am.

Relax & Rejuvenate

The Spa at The Address is all about nourishing the body and nurturing the soul. Set apart from the bustle of the city, our expert team uses products and therapies inspired by nature to ease away stress and revive spirits. Treatments have been carefully developed for both men and women and can be individually tailored around your wants and needs.

Eleven treatment rooms – including a couples' and Thai massage room

Relaxation suite with herbal teas and freshly squeezed juices

Steam bath and Aroma rooms

Hair and nail studio

Pools – 1000 sq m of swimming area cascading over five tiers

Fitness Centre with state-of-the-art exercise equipment

Meetings & Events

The Address Downtown Dubai makes a breathtaking venue for events or meetings. There are two ballrooms, a boardroom and two meeting venues, including the stunning Symphony Ballroom with its floor-to-ceiling windows, and views across Burj Khalifa. Catering for everything from intimate meetings for eight to grand functions for 550, each room features cutting-edge audio-visual and IT equipment. These exceptional facilities are supported by a team of talented, experienced events planners, so you can be confident every element of your event will be a success.



Studio Apartment



Two-bedroom Apartment

Contemporary Living

Your own tranquil escape in the midst of bustling Downtown Dubai. Our residences are ideal for business travellers, offering a spacious living area, modern kitchen, stylish bathroom and ultra-comfortable bed. As a resident, you will also have access to all hotel services and 24-hour facilities including concierge, laundry services and fitness centre.

132 STUDIO APARTMENTS
48.2 SQM / 519 SQF

336 ONE BEDROOM APARTMENTS
From 66.4 SQM to 93 SQM / 715 SQF to 1001 SQF

148 TWO BEDROOM APARTMENTS
From 164 SQM to 180.2 SQM / 1765 SQF to 1940 SQF

8 FOUR BEDROOM APARTMENTS
From 342.9 SQM to 443 SQM / 3691 SQF to 4768 SQF

The Address Dubai Mall

The Address Dubai Mall is the essence of chic city style, set amid the stores, restaurants and nightlife of the Downtown Dubai neighbourhood. From here you are a short stroll away from the epic Dubai Mall, the world's largest fashion and entertainment destination.

It is this same tailored-style that is woven into each of the 449 serviced residences including studios and penthouse apartments. These city residences are available for short and long term stays and offer excellent facilities paired with complete comfort and home-from-home convenience.

The Address Dubai Mall. Where life happens.

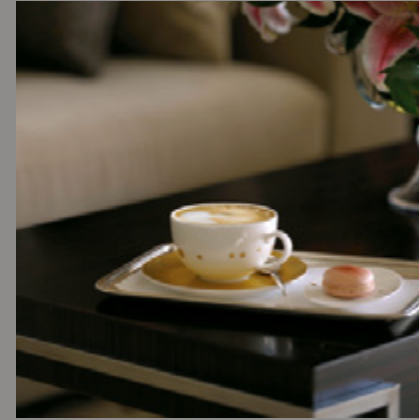




One-bedroom Apartment



Studio Apartment



Three-bedroom Apartment



Two-bedroom Apartment

Amenities

LOCATION. An urban icon, The Address Dubai Mall, is ideally located in the heart of one of the most prestigious leisure and business districts in the city, adjacent to Burj Khalifa and conveniently connected to the impressively expansive Dubai Mall. Set within central Downtown Dubai and only 15 minutes from Dubai International Airport, The Address Dubai Mall offers a perfect starting point from which to explore this dynamic city.

LIVING. Every living space is furnished with full-height windows and mesmerising views. It is a setting complemented by high-grade ceramic or marble tile flooring and subtle lighting.

DINING. Every apartment has its own open-plan kitchen with cabinets crafted from solid timber. The same high quality feel extends from the ceramic floor to the tops of the fitted cabinets.

BEDROOMS. Dressed to impress in light wood furnishings, every guest room is accessorized with avant-garde technological features and conveniences including a flat screen TV, complimentary wireless Internet and safety box. Soothing lighting, warm colours and congenial shapes create a chic yet serene ambience, with a hint of Middle Eastern traditions sprinkled into the contemporary design.

BATHROOMS: Each bathroom features high quality finishes, lending the room a sense of drama and luxury.

ARCHITECTURE. This 43 storey elliptical tower is a statement in style, attached to the mesmerizing Dubai Mall. Many of the residences feature spacious balconies with views across to the inspiring Burj Khalifa. And inside, the hotel spaces are equally impressive with a spectacular lobby creating the perfect first impression.

INTERIORS: Rooms are designed to be an oasis of calm, a place to rejuvenate and refresh. Top-of-the-range materials, are carefully selected to achieve a chic and serene ambience. Amid this are subtle Middle Eastern influences such as Mashrabiya motifs.

Features

Beautifully appointed furnished apartments complete with latest and modern appliances

Fully equipped gourmet kitchen – refrigerator, stove, oven, microwave, dishwasher and kitchenware

Washer/dryer, security safe, storage

LCD TV with International channels

Built in wardrobe, storage and shelf space

Services

Welcome amenities

Complimentary wireless Internet throughout the hotel

Dedicated Concierge

24-hour In Room Dining service

24-hour Business Lounge

Personal Fashion Advisor service provided upon request

Optional drop-off service for shopping packages

Fitness Centre with state-of-the-art equipment, sauna and steam rooms

QIX Kid's Club, a fun programme for our little guests

Hair salon

Direct access to The Dubai Mall



Amatista



Karat



Cabana

Restaurants & Lounges

Set amid this fashionista's paradise, we offer a myriad of dining options. Choose from excellent international cuisine, zesty al fresco dining or relax in one of our lounges.

EMBER GRILL AND LOUNGE. The city's destination of choice, Ember serves up inventive grill cuisine in a sleek and warm setting. It is the ideal venue for those keen to socialise with friends and family while enjoying a delicious menu of dishes. With its open-plan kitchen and vibrant lounge, Ember is at the heart of Dubai's fashionable scene. Lobby Level | Daily from 6.30pm to 11.00pm.

NA3NA3. Offers an impressive blend of Middle Eastern hospitality and authentic Arabic home style cooking, using traditional ingredients and seasonings. With live cooking stations, including Saj and Arabic bread ovens, the ambience is one of warmth and elegant simplicity. Modern Arabic cuisine. Lobby Level | Daily from 6.30am to 11.30pm.

KARAT. Karat is a gracefully designed lobby lounge at the heart of the hotel. A refined retreat to socialize and relax – from morning to evening. Lobby Level | 24 hours | Afternoon tea 3.00pm to 6.00pm.

CABANA. This hip outdoor venue features a cool poolside restaurant and terrace lounge. Grilled and baked delicacies can be enjoyed while lounging on beds in the cabanas. As the sun sets, exotic cocktails and music from our resident DJ is served to Dubai's fashionable set. Restaurant and lounge | 3rd Floor | 9.00am to 7.00pm in summer | 9.00am to 2.00am in winter.



Treatment Room



The Spa



Ruby Meeting Room

Relax & Rejuvenate

Soothe the senses at The Spa at The Address, a luxurious sanctuary of contemplation and tranquillity. Discover the curative wonders of the earth through our all-natural inspired products and therapies. Our holistic approach to mind and body is reflected in our signature treatments.

A complete menu of world-class experiences, including facials, purifying body wraps, intense body scrubs and intricate hand and foot care

Nine treatment rooms, including five for ladies and four for gentlemen

A spectacular swimming pool and landscaped pool deck

Rasul chambers and hydrotherapy facilities enable complete relaxation and rejuvenation

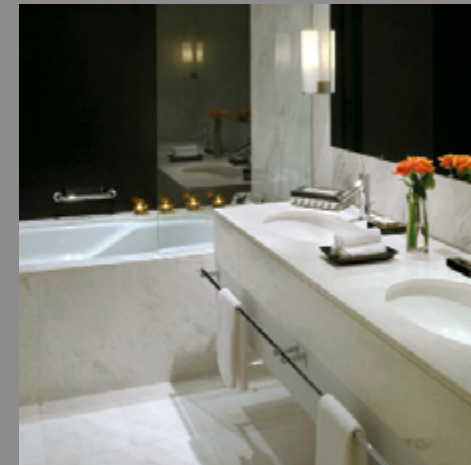
Sauna and steam bath facilities are available at the adjacent Fitness Centre

Meetings & Events

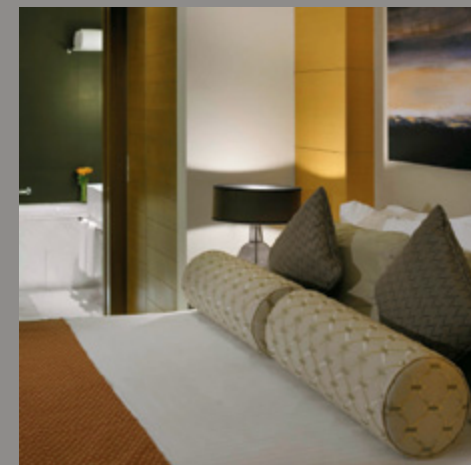
Enjoy a choice of unparalleled venues and facilities at The Address Dubai Mall. The hotel offers extensive space for meetings and functions including a large ballroom that can accommodate up to 600 guests and can be divided into three individual sections. Tailor-made menus crafted by our international chefs add a creative culinary flourish. The Address Dubai Mall also boasts a large pre-function area and six additional rooms of varying sizes, ranging in capacity from 15 to 40 guests. Each venue offers the latest in audiovisual, video conferencing and IT equipment, while a special lift in the ballroom makes it ideal for hosting spectacular car launches. A professional team complements the state-of-the-art conference facilities to ensure the success of every occasion.



Four-bedroom Apartment



Three-bedroom Apartment



Studio Apartment

Contemporary Living

These residences offer the best of every world: cutting edge technology and style together with classic, homely comforts. Located on the city's trend-setting Downtown Dubai district, this is the natural habitat for business travellers or those seeking a designer apartment for laid-back leisure escapes.

STUDIO APARTMENTS

From 53.3 SQM to 66.6 SQM / 574 SQF to 717 SQF

ONE BEDROOM APARTMENTS

From 71.8 SQM to 94.8 SQM / 773 SQF to 1020 SQF

TWO BEDROOM APARTMENTS

Maximum Total Area 140 SQM / 1507 SQF

THREE BEDROOM APARTMENTS

Maximum Total Area 191.7 SQM / 2063 SQF

The Address Dubai Marina

The Address Dubai Marina is the definition of waterfront style, a place where crystal-clear waters are mirrored in modern architecture and luxury yachts moor alongside trend-setting restaurants.

Set within this alluring hotel are 442 stunning serviced residences, each one with its own charm and individual appeal. Choose from sleek studios, majestic 3-4 bedroom penthouses and designer 1-2-3 room apartments.

All of our residences allow privileged access to our infinity pool, spa and business facilities.

From here, the best of this dynamic district is within easy reach: directly linked to the superb Dubai Marina Mall, premier boutiques, hip lounges and Dubai's beautiful sun-strewn beaches.

The Address Dubai Marina. Where life happens.





Three-bedroom Apartment



Two-bedroom Apartment



One-bedroom Apartment



One-bedroom Apartment

Amenities

LOCATION. Looking out over the world's largest man-made marina, the finest shops, late night lounges and trend-setting restaurants are yours to explore. A fashionista's dream, the hotel is directly linked to the Dubai Marina Mall, boasting 160 stores, from premier boutiques to designer names.

The beach is just a stroll away while Dubai Media City, Dubai Internet City, Knowledge Village, Jebel Ali Free Zone and the Metro station are all within easy reach. Arriving is as simple as flying into Dubai International or Abu Dhabi International Airport and taking the Sheikh Zayed Road straight to the hub of the action.

LIVING. The living spaces have been designed to be at once warm and cool. Soft whites and beiges are accented with deeper colours, carefully chosen to enhance the mood of different zones. The overall ambience is completed with a mixture of tactile finishes such as timber, marble and intelligent lighting.

DINING. For stylish entertaining or simply everyday eating, each apartment has its own open-plan kitchen and dining area featuring cream leather dining chairs, solid wood tables, ceramic flooring and top-quality fitted cabinets.

BEDROOMS. The hotel's residences are a homage to all things contemporary: a space to kick-back and unwind amongst the finest linen and immaculately designed furnishings. Where Flat Screen TVs, complimentary wireless internet access and handpicked amenities ensure the most productive and relaxing time.

BATHROOMS. With their strong, crisp lines and smooth marble surfaces, the bathrooms evoke a sense of sophisticated splendour. Dual hand basins, an invigorating shower, deep bath, soft white towels and atmospheric lighting complete the scene of utter relaxation.

ARCHITECTURE. Looking out across the marina, The Address Dubai Marina is a reflection of this inspiring setting. The development is anchored by a sleek tower, flanked by the gorgeous infinity pool.

INTERIORS. The building is awash with distinctive features including five large chandeliers in the main lobby and a 10-storey Mural Art Wall. Each individual residence continues this opulent theme with tactile finished, sleek colour schemes and atmospheric zonal lighting.

Features

Beautifully appointed furnished apartments complete with latest and modern appliances

Fully equipped gourmet kitchen – refrigerator, stove, oven, microwave, dishwasher and kitchenware

Washer/dryer, security safe, storage

LCD TV with International channels

Built in wardrobe, storage and shelf space

Services

Dedicated concierge

24-hour in-room dining service

Complimentary wireless internet access throughout the hotel

Business Lounge

Professional associates to help with all your business needs

Qix Club: a fun programme for children

Direct connection to Dubai Marina Mall from the hotel

Short walk from the nearby beach

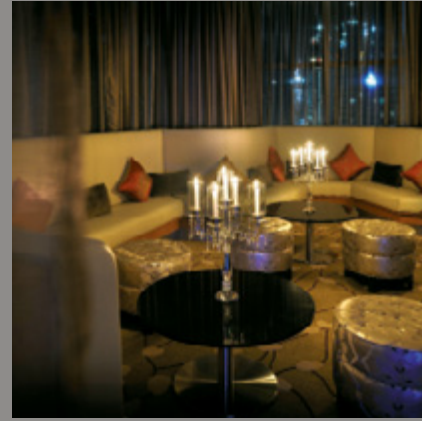
Private limousine transfers available upon request



Rive Gauche



Mazina



Blends



The Spa



Garnet Boardroom

Restaurants & Lounges

Enjoy breakfast meetings with a fresh, delicious twist. Exciting evenings of authentic dishes from around the world freshly prepared in front of you. Look forward to a diverse tour of international haute cuisine – this is the marina’s social hotspot.

MAZINA. Serving a tastefully eclectic variety of contemporary cuisine from around the globe, sample delicious Asian, Arabic and European dishes from hot wok Cantonese to Rotisserie grill, cooked right before your eyes. With sweeping views of the marina and a lively atmosphere, Mazina is a great destination for family and friends. Lobby Level | Breakfast 6.30am to 10.30am | Lunch 12.00pm to 3.00pm | Dinner 6.30pm to 11.00pm daily.

BLENDS. Dubai’s hottest lounge, Blends offers three innovative experiences in one trendy setting. With a cool lounge, dedicated cigar room and stylish cocktail area, Blends is at the pinnacle of Dubai’s sophisticated nightlife scene. 4th floor | Saturday to Wednesday 5.00pm to 2.00am | Thursday and Friday 5.00pm to 3.00am.

SHADES. The ultimate lounging destination, located pool side. By day, Shades serves a gorgeous selection of salads and sandwiches, mezze and Asian wok dishes, smoothies and fresh juices. By night it is the perfect urban escape, with delicious signature cocktails, spectacular marina views and our in-house DJ spinning the hippest beats every Tuesday and Friday. 4th floor | 9.00am to 7.00pm in the summer | 9.00am to 12.00am in the winter.

KAMBAA. Choose from an appetizing array of delightful savoury snacks, exquisite pastries, sweets and Afternoon Tea at Kambaa, the hotel’s chic lobby lounge. Lobby Level | Breakfast, Lunch 7.00am to midnight | Afternoon Tea 3.00pm to 5.00pm daily.

Relax & Rejuvenate

Escape to a world of serenity, tranquillity and gracious hospitality. The Spa on the 3rd floor is the ultimate place in which to free mind and body. Restore your natural balance with our gorgeous treatments and therapeutic aromas.

The Spa featuring essential oils by Aromatherapy Associates

Six female, four male and two couple’s treatment rooms with en-suite showers

Fully equipped fitness centre featuring sauna and steam rooms

Hair salon

Infinity swimming pool on the 4th floor with views over the marina

Meetings & Events

It is easy to see why the hotel is considered one of the most exceptional meeting venue in the city. Swathed in natural light, the 900 square meter Ballroom can accommodate up to 1000 guests. Our 15 additional meeting rooms, featuring balconies overlooking the marina, comfortably seat 10 to 100 people. To make your visit as productive as possible, the hotel features complimentary wireless internet access and our team can arrange audio visual equipment for every kind of occasion – from video conferencing to cinema-style presentations.



Penthouse Master Bedroom



Three-bedroom Apartment



One-bedroom Apartment

Contemporary Living

The Address Dubai Marina apartments reflect all the style and panache of one of Dubai's most renowned locations. The ideal base for professionals, every apartment includes a spacious living area, modern kitchen, stylish bathroom and ultra-comfortable bed. As a resident, you will have privileged access to our exceptional services and facilities including concierge, laundry services, pool and the residents' fitness centre.

STUDIO APARTMENTS

From 50.1 SQM to 51.1 SQM / 539 SQF to 550 SQF

ONE BEDROOM APARTMENTS

From 71.3 SQM to 84.1 SQM / 767 SQF to 905 SQF

TWO BEDROOM APARTMENTS

From 123.8 SQM to 177.3 SQM / 1333 SQF to 1909 SQF

THREE BEDROOM APARTMENTS

Maximum Total Area 173.4 SQM / 1867 SQF

THREE BEDROOM PENTHOUSE

From 299 SQM to 318.5 SQM / 3219 SQF to 3428 SQF

FOUR BEDROOM PENTHOUSE

Maximum Total Area 371.3 SQM / 3997 SQF



Inspiring



Effortless



Detail



Elegance

